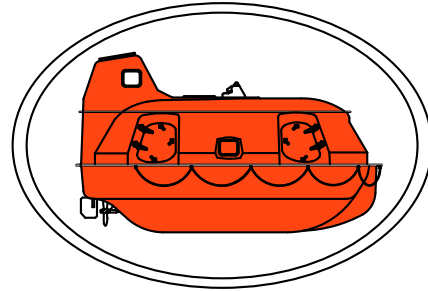


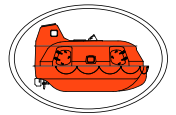
# SURVIVAL SYSTEMS INTERNATIONAL



## Offshore Evacuation Systems Product Catalog and Technical Data Information

# EVACUATION SYSTEMS CURRENT PRODUCTION MODELS

**SURVIVAL  
SYSTEMS  
INTERNATIONAL**

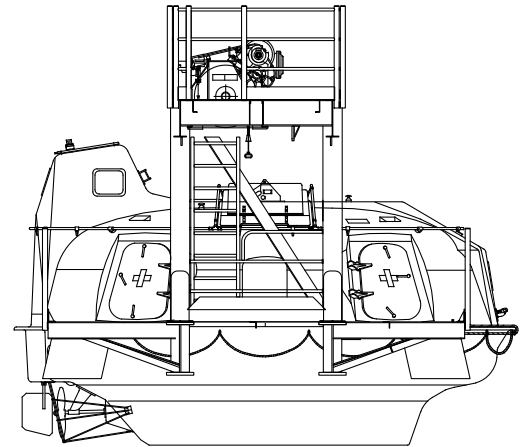
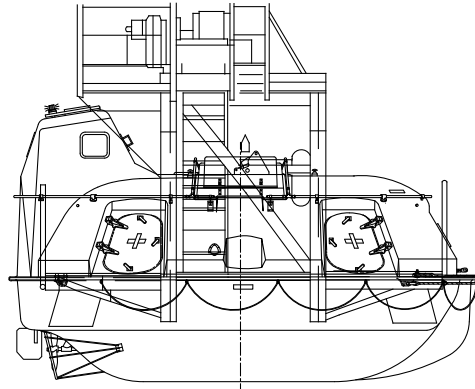
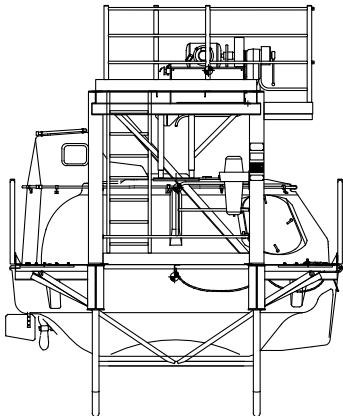
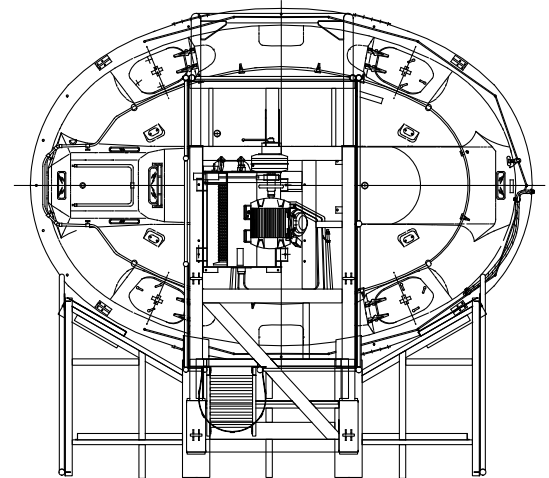
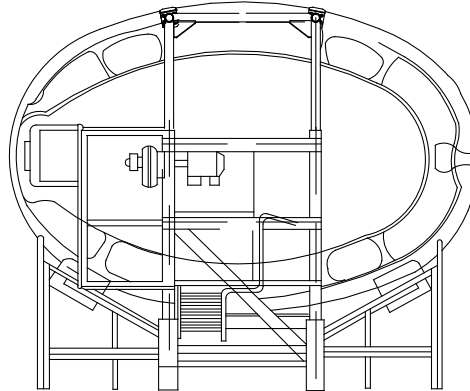
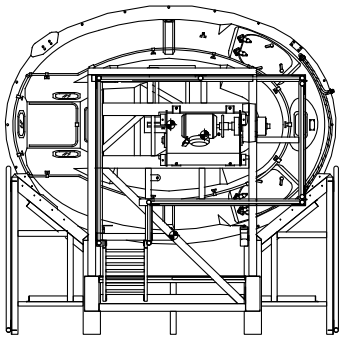


LIFEBOAT MANUFACTURING SINCE 1968 / DESIGNED FOR THE OIL AND GAS INDUSTRY / SAFELY EVACUATED OVER 2,200 PERSONNEL

UP TO:  
**21-Passengers**

UP TO:  
**36-Passengers**

UP TO:  
**60-Passengers**



## CA2100 Capsule

Single Hook / Single Cable  
USCG Lifeboat #160.135/40/0  
USCG Rescue Boat #160.156/110/0

PL2100 Hold and Launch Platform  
W1400 Winch Assembly

## CA3600 Capsule

Single Hook / Single Cable  
USCG Lifeboat #160.135/18/2  
USCG Rescue Boat #160.156/111/0

PL3401 Hold and Launch Platform  
W2800 Winch Assembly

## CA6000 Capsule

Single Hook / Single Cable  
USCG Lifeboat #160.135/17/3  
USCG Rescue Boat #160.156/54/0

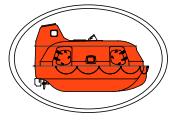
PL5000 Hold and Launch Platform  
W5000 Winch Assembly

Since 1968, Survival Systems International has Manufactured and Delivered over 5,500 capsules worldwide. SSI has designed, manufactured and delivered over 12 different styles of capsules to meet the ever-changing needs of the offshore industry.



# TECHNICAL DATA SHEET OFFSHORE CAPSULE CA2100

SURVIVAL  
SYSTEMS  
INTERNATIONAL



LIFEBOAT MANUFACTURING SINCE 1968 / DESIGNED FOR THE OIL AND GAS INDUSTRY / SAFELY EVACUATED OVER 2,200 PERSONNEL

## SSI CA2100 Survival Capsule (Totally Enclosed Motor Propelled Survival Craft)

### CAPSULE DATA

<b>Quality:</b>	SSI is approved to the provisions set forth by <b>ISO 9001:2008 AS9100</b>	
<b>Approvals/ Compliance:</b>	SOLAS USCG Lifeboat Approval No. 160.135/40/0 USCG Rescue Boat Approval No. 160.156/110/0 Individually inspected by ABS on behalf of USCG Proudly manufactured in the USA	
<b>Capacity:</b>	21 passengers (at 220 lbs / 100 kg) Access through two water-tight hinged doors and a top hatch for access to hook	
<b>Dimensions:</b>	174" x 126" x 119" (inches) / 4419 x 3200 x 3022 (mm)	
<b>Weights:</b>	Condition A-Weight: 11,074 lbs / 5024 kg	Condition B-Weight: 5,557 lbs / 2521 kg
<b>Materials:</b>	Fire retardant vinyl ester resin / fiberglass (10 year warranty against osmosis blistering) Stainless steel hook mechanism and stainless steel structural yoke frame	
<b>Hook:</b>	Single hook, Lift-Over-Center Design, on-load & off-load release functions USCG Hook Approval No. 160.133/67/0. Complies with LSA code as amended by MSC.320(89) No hydrostatic locking device.	
<b>Windows:</b>	Fire resistance safety glass, hinged opening window for helmsman	
<b>Single Cable:</b>	Torque balanced non-rotating 3/4" (19mm) diameter wire cable	
<b>Self Righting:</b>	Positive balance stability GZ-Curve, 138+ cubic feet of hull buoyancy	
<b>Electrical Sys:</b>	12V DC dual battery circuit, solar panel trickle charger	
<b>Air System:</b>	Self-contained air support system 3,000 psi, providing 10+ mins of breathable air (Optional H <sub>2</sub> S breathable air system kit)	
<b>Other Kits:</b> (*optional)	EPIRB   *Radio Communications Equipment   Integrated Sprinkler System   *Dehumidifier Kit   Man Overboard Recovery Kit   *Stretcher & Stretcher Supports   Radar Reflector   Fender Kit   Strobe Light & Search Light   *120V AC Power System   *Fire Suppression System   and more...	



### ENGINE DATA

<b>Manufacturer:</b>	BUKH	<b>Fuel Tank Capacity:</b>	60+ gallons
<b>Model:</b>	BBV 2203 marine diesel engine	<b>Standard Fuel Range:</b>	24 hours
<b>Horsepower:</b>	48 @ full 3,000 RPM	<b>Cooling System:</b>	Keel cooler & heat exchanger
<b>Max. Speed:</b>	6 knots	<b>Start System:</b>	Dual battery electric start (optional secondary hydraulic starter)
<b>Propeller:</b>	22" bronze, 3-bladed, propeller guard		

### CONTACT INFO

For additional information please contact us:

Western Hemisphere: 931 Industry Road PO Box 1567 Kenner, LA 70062 Ph: +1 504-469-4545

Eastern Hemisphere: Viking Road Gapton Hall, Industrial Estate Great Yarmouth, Norfolk, NR31 0NU England Ph: +44 1493 659411

Corporate Headquarters and Manufacturing: 34140 Valley Center Road - Valley Center, CA 92082 Ph: +1 760-749-6800



[www.survivalsystemsinternational.com](http://www.survivalsystemsinternational.com)



760.749.6800

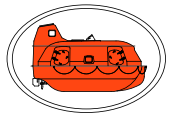


[info@ssivc.com](mailto:info@ssivc.com)

Survival Systems International is proud to be "Your Partner in Safety"

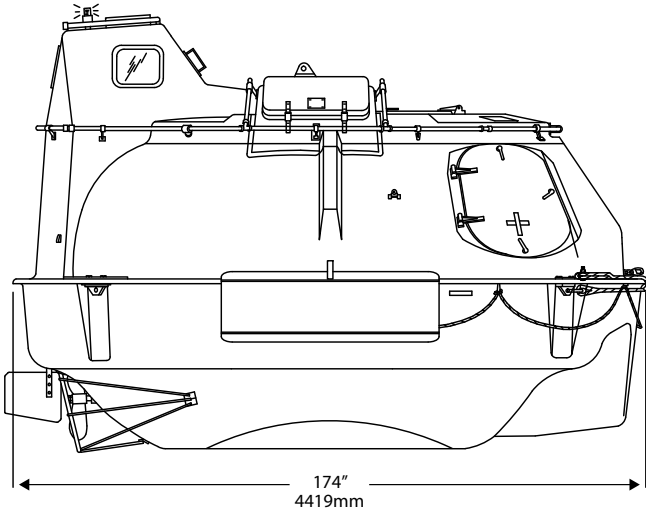
# TECHNICAL DATA SHEET OFFSHORE CAPSULE CA2100

SURVIVAL  
SYSTEMS  
INTERNATIONAL

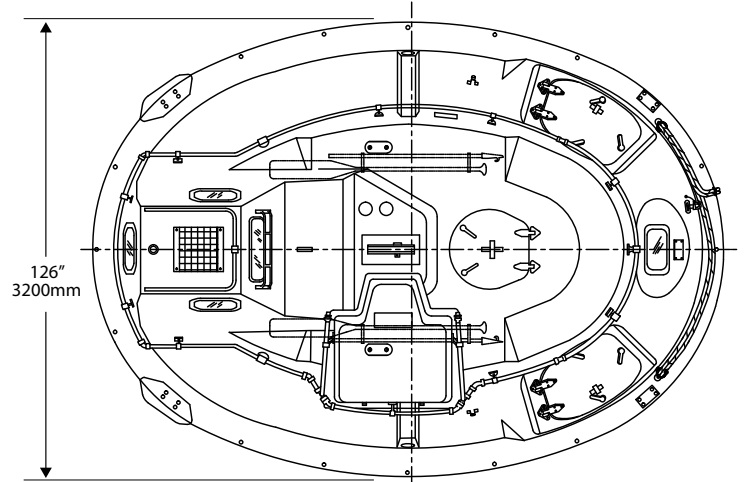


LIFEBOAT MANUFACTURING SINCE 1968 / DESIGNED FOR THE OIL AND GAS INDUSTRY / SAFELY EVACUATED OVER 2,200 PERSONNEL

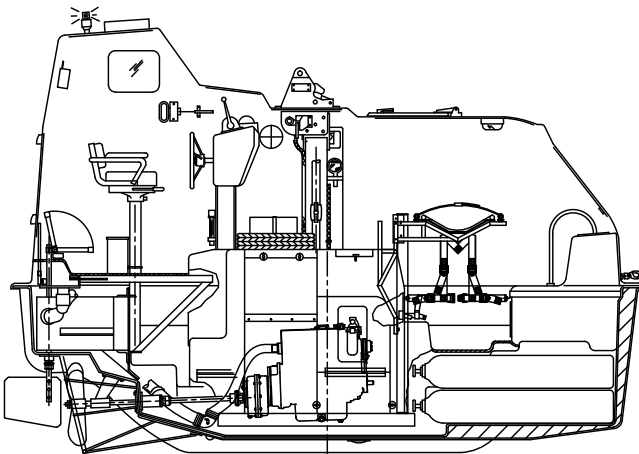
## CA2100 Survival Capsule (Totally Enclosed Motor Propelled Survival Craft)



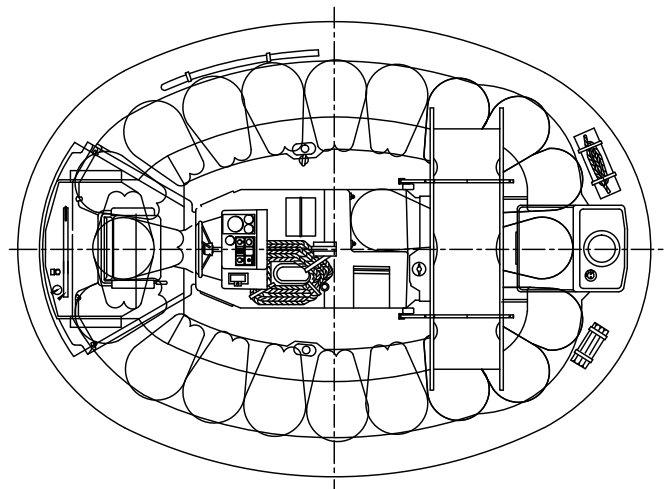
ELEVATION LOOKING PORT



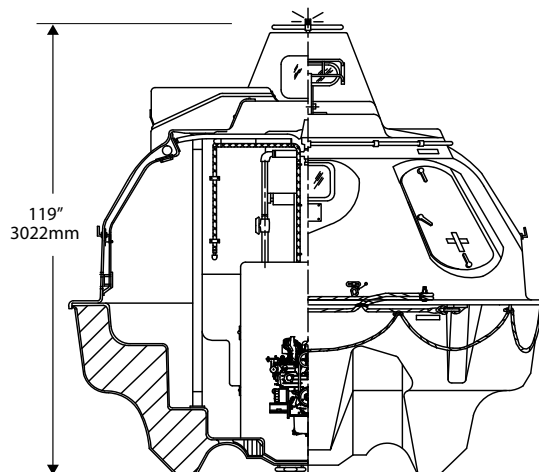
TOP VIEW



INTERIOR VIEW



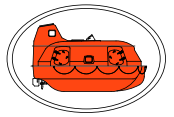
SEATING ARRANGEMENT



ELEVATION LOOKING AFT

# TECHNICAL DATA SHEET HOLD & LAUNCH PLATFORM PL2100

**SURVIVAL  
SYSTEMS  
INTERNATIONAL**



LIFEBOAT MANUFACTURING SINCE 1968 / DESIGNED FOR THE OIL AND GAS INDUSTRY / SAFELY EVACUATED OVER 2,200 PERSONNEL

## PL2100 Platform for use with SSI CA2100 Survival Capsule

### PLATFORM INFO

<b>Approvals/ Compliance:</b>	SOLAS USCG Approval No. 160.132/59/0 Individually inspected by ABS on behalf of USCG Proudly manufactured in the USA
<b>Dimensions:</b>	215.5" x 168" x 140" (inches) / 5448 x 4267 x 3560 (mm)
<b>Weight:</b>	5,700 lbs / 2585 kg
<b>Interface:</b>	SSI Capsule (CA2100) stowed securely, with walkway access to doors for boarding SSI Winch (W1400) mounted to platform directly above capsule Complete wire schematics for all electrical interfaces Ladder, guardrails, safety gate, kick-plates all in compliance with industry standards Grating available in galvanized steel or phenolic compound



### LOAD DIAGRAM & CALCULATION

$$V = \sum W = 17,816 \text{ lbs (8,082 kg)}$$

$$M = \sum WX = 1.61 \times 10^6 \text{ in.lbs}$$

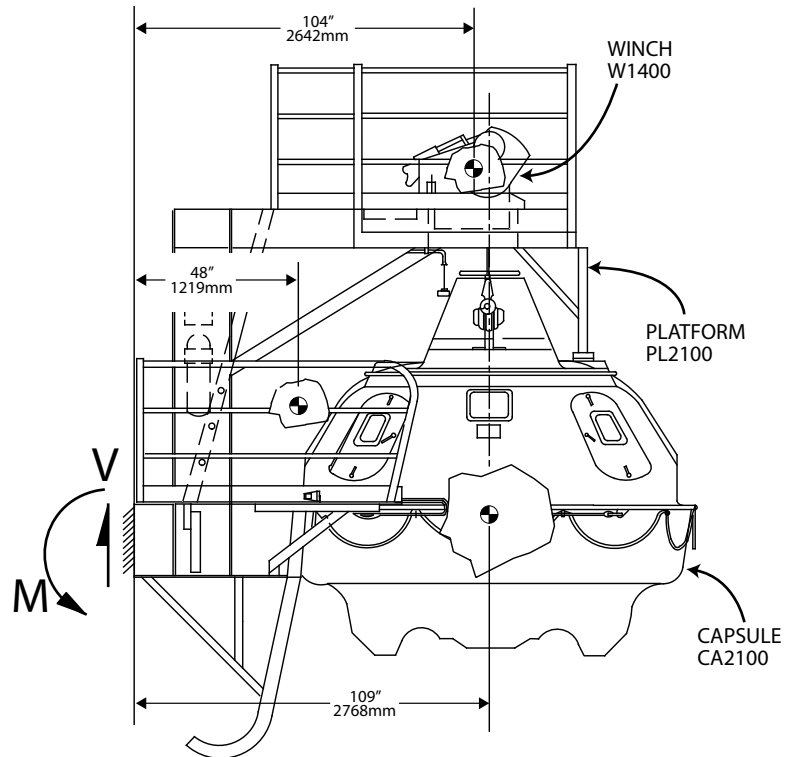
At platform interface (18,424 kg M)

Max loads in the RH Beam

With Capsule Lowered

$$V_{\text{MAX RH}} = 12,934 \text{ lbs (5,867 kg)}$$

$$M_{\text{MAX RH}} = 1.25 \times 10^6 \text{ in.lbs (14,370 kg M)}$$



### CONTACT INFO

For additional information please contact us:

Western Hemisphere: 931 Industry Road PO Box 1567 Kenner, LA 70062 Ph: +1 504-469-4545

Eastern Hemisphere: Viking Road Gapton Hall, Industrial Estate Great Yarmouth, Norfolk, NR31 0NU England Ph: +44 1493 659411

Corporate Headquarters and Manufacturing: 34140 Valley Center Road - Valley Center, CA 92082 Ph: +1 760-749-6800

Survival Systems International has been approved to the provisions set forth by **ISO 9001:2008 AS9100 Rev C**



[www.survivalsystemsinternational.com](http://www.survivalsystemsinternational.com)



760.749.6800

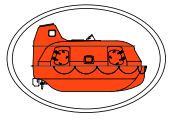


[info@ssivc.com](mailto:info@ssivc.com)

Survival Systems International is proud to be "Your Partner in Safety"

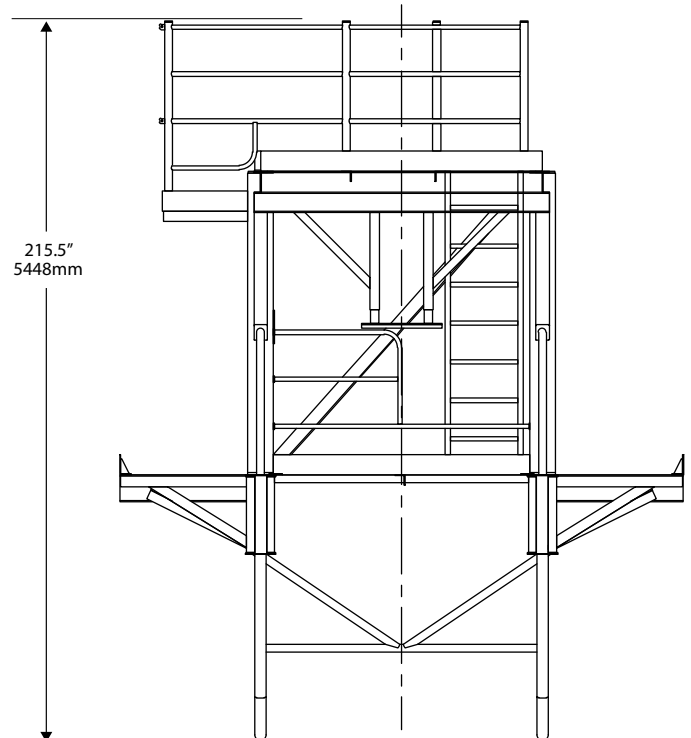
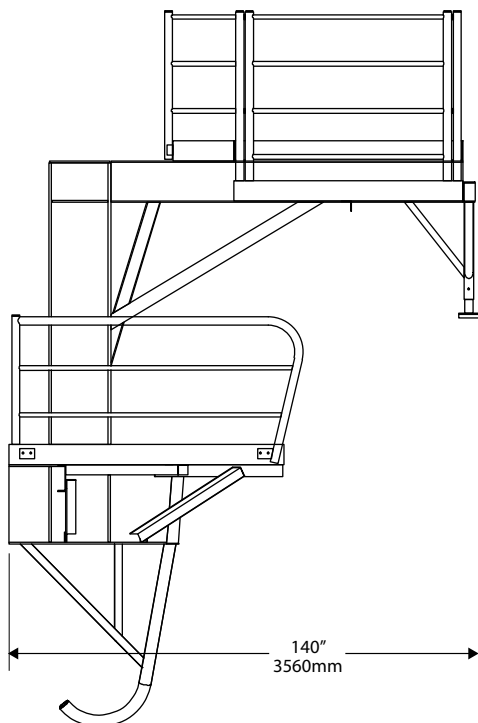
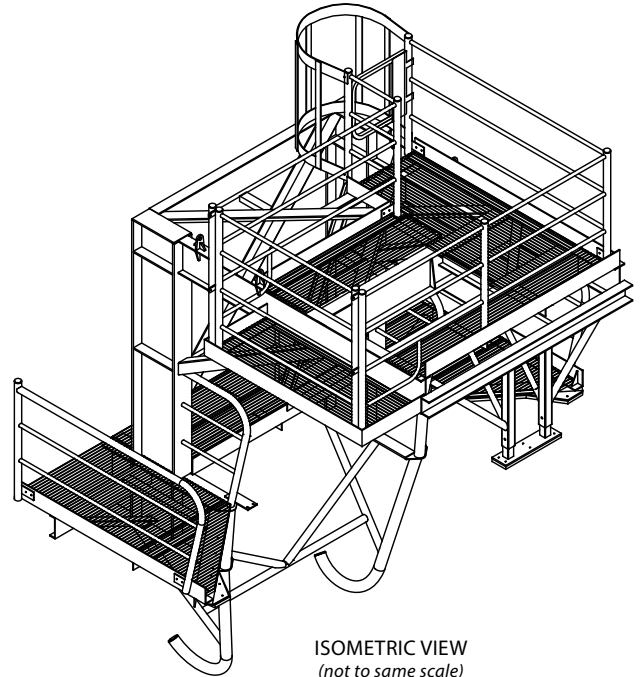
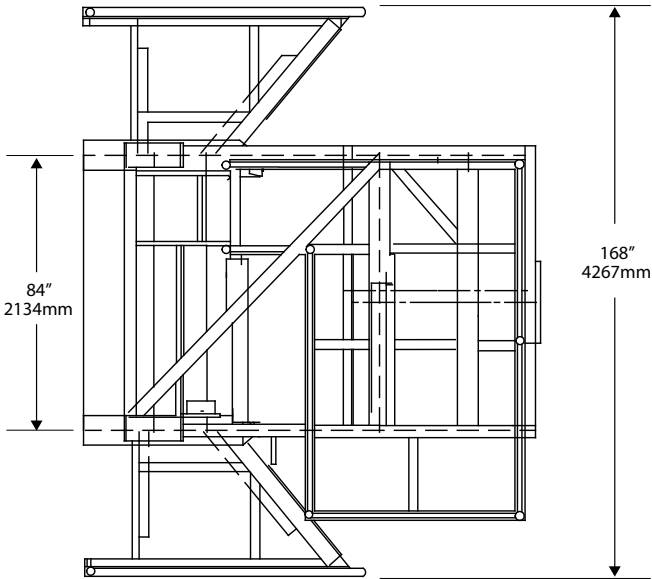
# TECHNICAL DATA SHEET HOLD & LAUNCH PLATFORM PL2100

SURVIVAL  
SYSTEMS  
INTERNATIONAL



LIFEBOAT MANUFACTURING SINCE 1968 / DESIGNED FOR THE OIL AND GAS INDUSTRY / SAFELY EVACUATED OVER 2,200 PERSONNEL

## PL2100 Platform for use with SSI CA2100 Survival Capsule



[www.survivalsystemsinternational.com](http://www.survivalsystemsinternational.com)



760.749.6800

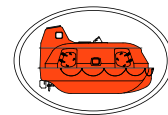


[info@ssivc.com](mailto:info@ssivc.com)

Survival Systems International is proud to be "Your Partner in Safety"

# TECHNICAL DATA SHEET OFFSHORE CAPSULE CA3600

SURVIVAL  
SYSTEMS  
INTERNATIONAL



LIFEBOAT MANUFACTURING SINCE 1968 / DESIGNED FOR THE OIL AND GAS INDUSTRY / SAFELY EVACUATED OVER 2,200 PERSONNEL

## SSI CA3600 Survival Capsule (Totally Enclosed Motor Propelled Survival Craft)

### CAPSULE DATA

<b>Quality:</b>	SSI is approved to the provisions set forth by <b>ISO 9001:2008 AS9100</b>
<b>Approvals/ Compliance:</b>	SOLAS USCG Lifeboat Approval No. 160.135/18/2 USCG Rescue Boat Approval No. 160.156/111/0 Individually inspected by ABS on behalf of USCG Proudly manufactured in the USA
<b>Capacity:</b>	36 passengers (at 210 lbs / 95 kg) Access through two water-tight hinged doors and a top hatch for access to hook
<b>Dimensions:</b>	228" x 150" x 132.5" (inches) / 5791 x 3810 x 3365.5 (mm)
<b>Weights:</b>	Condition A-Weight: 7,423 lbs / 3367 kg      Condition B-Weight: 15,979 lbs / 7248 kg
<b>Materials:</b>	Fire retardant vinyl ester resin / fiberglass (10 year warranty against osmosis blistering) Stainless steel hook mechanism and stainless steel structural yoke frame
<b>Hook:</b>	Single hook, Lift-Over-Center Design, on-load & off-load release functions USCG Hook Approval No. 160.133/66/0. Complies with LSA code as amended by MSC.320(89) No hydrostatic locking device.
<b>Windows:</b>	Fire resistance safety glass, hinged opening window for helmsman
<b>Single Cable:</b>	Torque balanced non-rotating 1" (24mm) diameter wire cable
<b>Self Righting:</b>	Positive balance stability GZ-Curve, 180+ cubic feet of hull buoyancy
<b>Electrical Sys:</b>	12V DC dual battery circuit, solar panel trickle charger
<b>Air System:</b>	Self-contained air support system 3,000 psi, providing 10+ mins of breathable air (Optional H <sub>2</sub> S breathable air system kit)
<b>Other Kits:</b>	EPIRB   *Radio Communications Equipment   Integrated Sprinkler System   *Dehumidifier Kit   (*optional) Man Overboard Recovery Kit   *Stretcher & Stretcher Supports   Radar Reflector   Fender Kit   Strobe Light & Search Light   *120V AC Power System   *Fire Suppression System   and more...



### ENGINE DATA

<b>Manufacturer:</b>	BUKH	<b>Fuel Tank Capacity:</b>	60+ gallons
<b>Model:</b>	BBV 2203 marine diesel engine	<b>Standard Fuel Range:</b>	24 hours
<b>Horsepower:</b>	48 @ full 3,000 RPM	<b>Cooling System:</b>	Keel cooler & heat exchanger
<b>Max. Speed:</b>	6 knots	<b>Start System:</b>	Dual battery electric start (optional secondary hydraulic starter)
<b>Propeller:</b>	22" bronze, 3-bladed, propeller guard		

### CONTACT INFO

For additional information please contact us:

Western Hemisphere: 931 Industry Road PO Box 1567 Kenner, LA 70062 Ph: +1 504-469-4545

Eastern Hemisphere: Viking Road Gapton Hall, Industrial Estate Great Yarmouth, Norfolk, NR31 0NU England Ph: +44 1493 659411

Corporate Headquarters and Manufacturing: 34140 Valley Center Road - Valley Center, CA 92082 Ph: +1 760-749-6800



[www.survivalsystemsinternational.com](http://www.survivalsystemsinternational.com)



760.749.6800



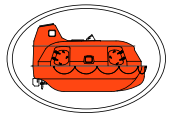
[info@ssivc.com](mailto:info@ssivc.com)

Survival Systems International is proud to be "Your Partner in Safety"



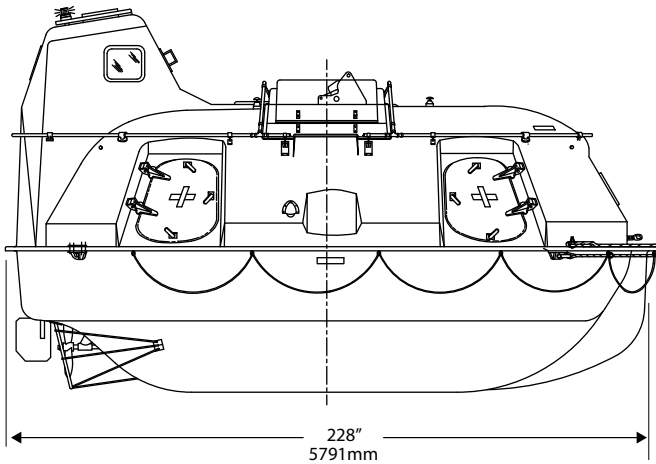
# TECHNICAL DATA SHEET OFFSHORE CAPSULE CA3600

SURVIVAL  
SYSTEMS  
INTERNATIONAL

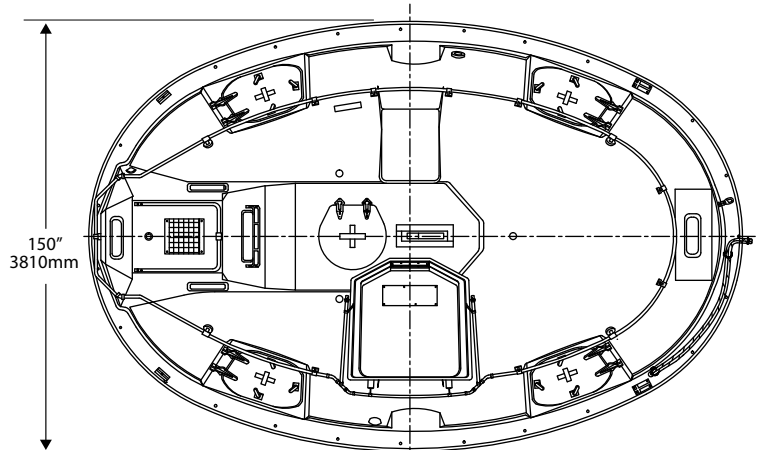


LIFEBOAT MANUFACTURING SINCE 1968 / DESIGNED FOR THE OIL AND GAS INDUSTRY / SAFELY EVACUATED OVER 2,200 PERSONNEL

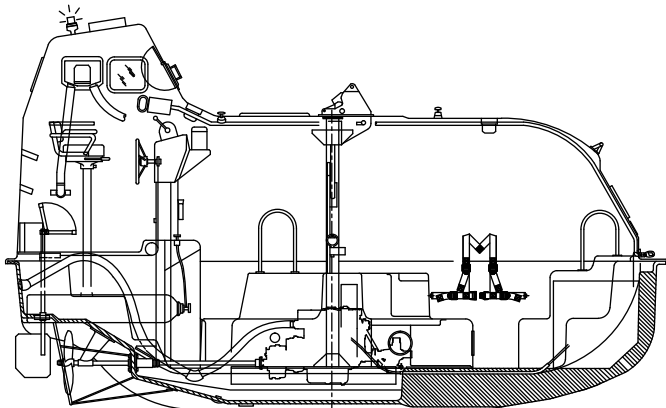
## CA3600 Survival Capsule (Totally Enclosed Motor Propelled Survival Craft)



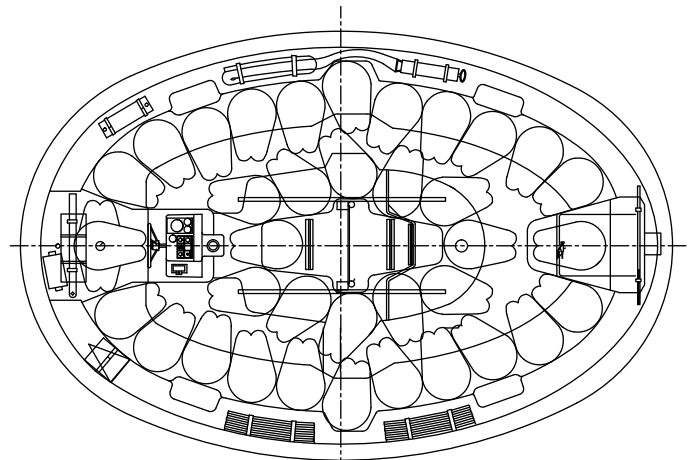
ELEVATION LOOKING PORT



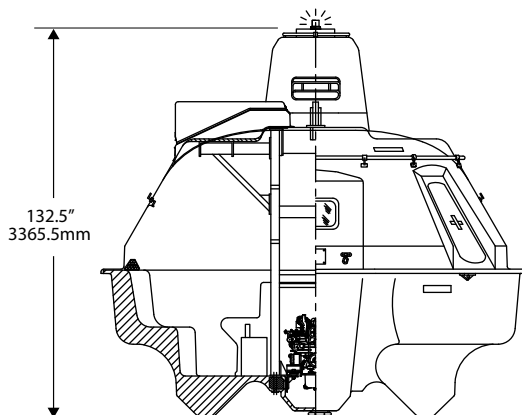
TOP VIEW



INTERIOR VIEW



SEATING ARRANGEMENT



ELEVATION LOOKING AFT



[www.survivalsystemsinternational.com](http://www.survivalsystemsinternational.com)



760.749.6800

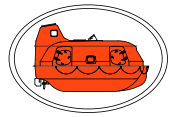


[info@ssivc.com](mailto:info@ssivc.com)

Survival Systems International is proud to be "Your Partner in Safety"

# TECHNICAL DATA SHEET HOLD & LAUNCH PLATFORM PL3401

**SURVIVAL  
SYSTEMS  
INTERNATIONAL**



LIFEBOAT MANUFACTURING SINCE 1968 / DESIGNED FOR THE OIL AND GAS INDUSTRY / SAFELY EVACUATED OVER 2,200 PERSONNEL

## PL3401 Platform for use with SSI CA3600 Survival Capsule

### PLATFORM INFO

<b>Approvals/ Compliance:</b>	SOLAS USCG Approval No. 160.132/54/0 Individually inspected by ABS on behalf of USCG Proudly manufactured in the USA
<b>Dimensions:</b>	221" x 188" x 167" (inches) / 5613 x 4775 x 4242 (mm)
<b>Weight:</b>	11,685 lbs / 5300 kg
<b>Interface:</b>	SSI Capsule (CA3600) stowed securely, with walkway access to doors for boarding SSI Winch (W2800) mounted to platform directly above capsule Complete wire schematics for all electrical interfaces Ladder, guardrails, safety gate, kick-plates all in compliance with industry standards Grating available in galvanized steel or phenolic compound



### LOAD DIAGRAM & CALCULATION

$$V = \Sigma W = 24,760 \text{ lbs (11,231 kg)}$$

$$M = \Sigma WX = 2.306 \times 10^6 \text{ in.lbs}$$

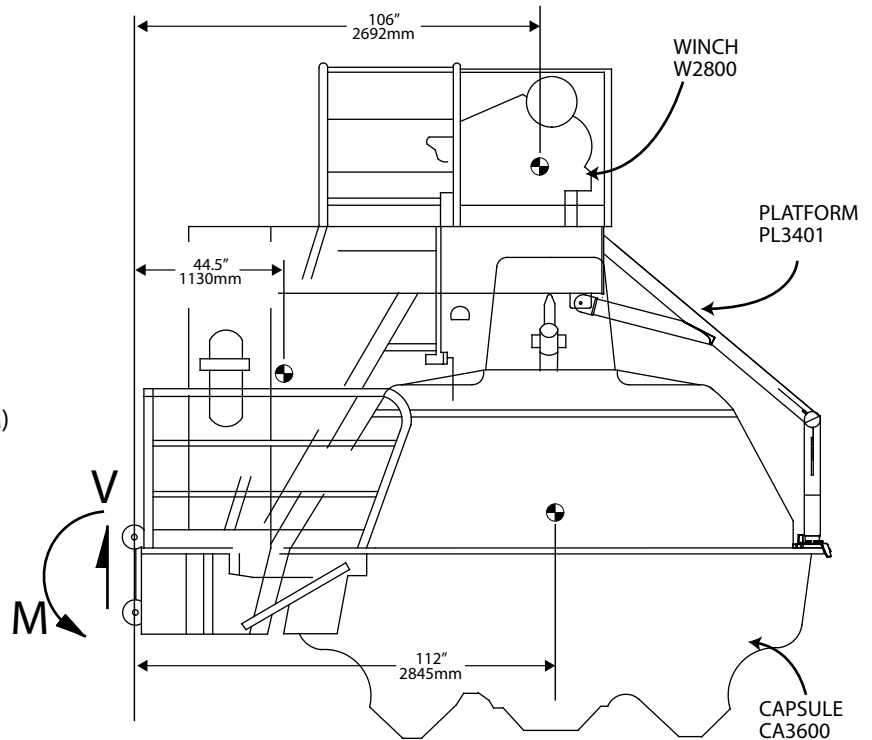
At platform interface (26,577 kg M)

Max loads in the LH Beam

With Capsule Lowered

$$V_{\text{MAX LH}} = 20,380 \text{ lbs (9,244 kg)}$$

$$M_{\text{MAX LH}} = 2.014 \times 10^6 \text{ in.lbs (23,205 kg M)}$$



### CONTACT INFO

For additional information please contact us:

Western Hemisphere: 931 Industry Road PO Box 1567 Kenner, LA 70062 Ph: +1 504-469-4545

Eastern Hemisphere: Viking Road Gapton Hall, Industrial Estate Great Yarmouth, Norfolk, NR31 0NU England Ph: +44 1493 659411

Corporate Headquarters and Manufacturing: 34140 Valley Center Road - Valley Center, CA 92082 Ph: +1 760-749-6800

Survival Systems International has been approved to the provisions set forth by **ISO 9001:2008 AS9100** Rev C



[www.survivalsystemsinternational.com](http://www.survivalsystemsinternational.com)



760.749.6800

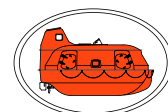


[info@ssivc.com](mailto:info@ssivc.com)

Survival Systems International is proud to be "Your Partner in Safety"

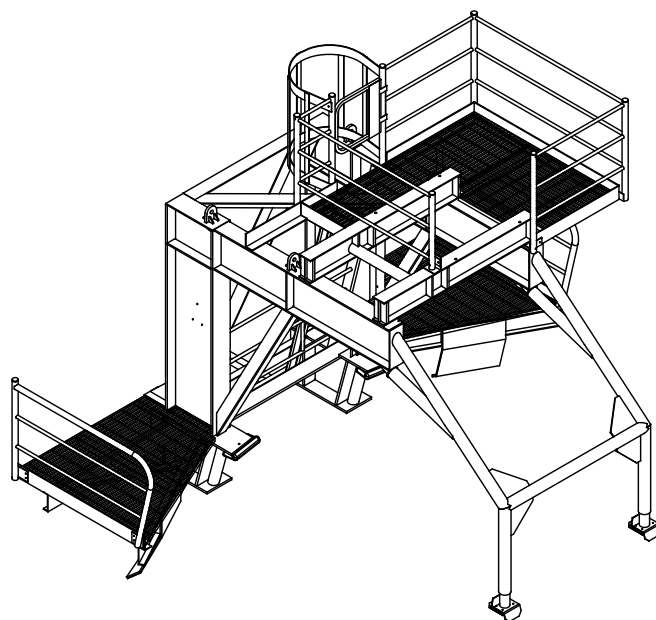
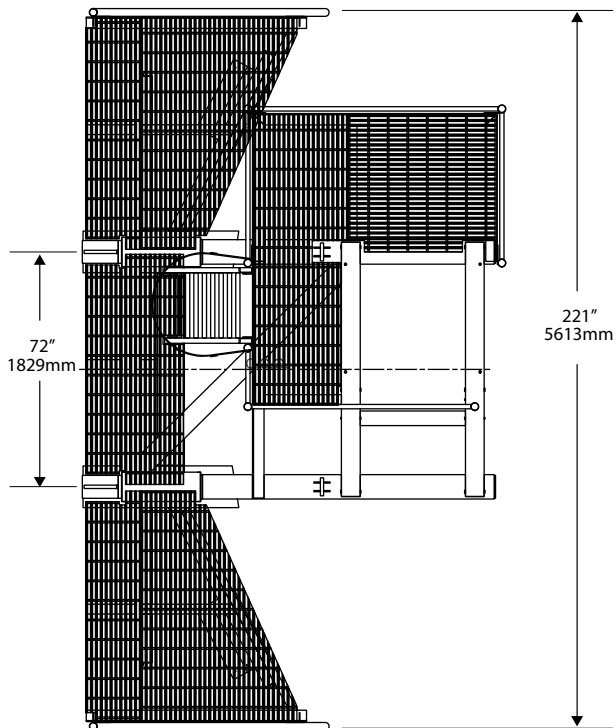
# TECHNICAL DATA SHEET HOLD & LAUNCH PLATFORM PL3401

SURVIVAL  
SYSTEMS  
INTERNATIONAL

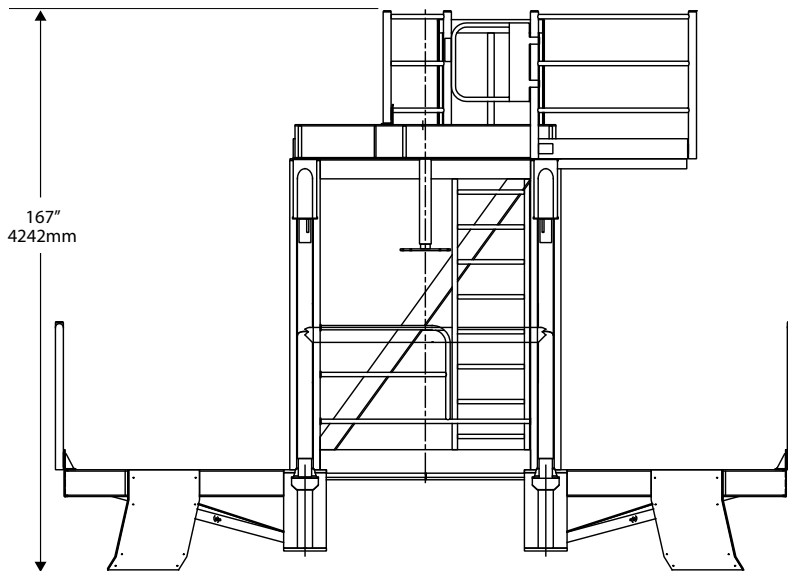
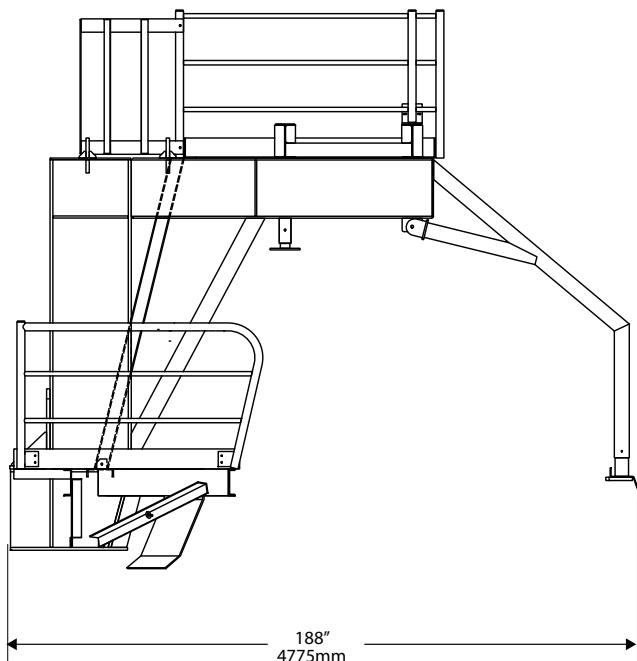


LIFEBOAT MANUFACTURING SINCE 1968 / DESIGNED FOR THE OIL AND GAS INDUSTRY / SAFELY EVACUATED OVER 2,200 PERSONNEL

## PL3401 Platform for use with SSI CA3600 Survival Capsule



ISOMETRIC VIEW  
*(not to same scale)*



[www.survivalsystemsinternational.com](http://www.survivalsystemsinternational.com)



760.749.6800

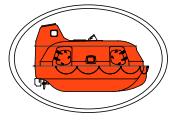


[info@ssivc.com](mailto:info@ssivc.com)

Survival Systems International is proud to be "Your Partner in Safety"

# TECHNICAL DATA SHEET OFFSHORE CAPSULE CA6000



SURVIVAL  
SYSTEMS  
INTERNATIONAL



LIFEBOAT MANUFACTURING SINCE 1968 / DESIGNED FOR THE OIL AND GAS INDUSTRY / SAFELY EVACUATED OVER 2,200 PERSONNEL

## CA6000 Survival Capsule (Totally Enclosed Motor Propelled Survival Craft)

### CAPSULE DATA

<b>Approvals/ Compliance:</b>	SOLAS USCG Lifeboat Approval No. 160.135/17/3 USCG Rescue Boat Approval No. 160.156/54/0 Individually inspected by ABS on behalf of USCG Proudly manufactured in the USA		
<b>Capacity:</b>	60 passengers (at 220 lbs / 100 kg) Access through four water-tight hinged doors (2 port, 2 starboard). Top hatch for access to hook.		
<b>Dimensions:</b>	237" x 168" x 144" (inches) / 6020 x 4268 x 3638 (mm)		
<b>Weights:</b>	Condition A-Weight: 8,739 lbs / 3964 kg      Condition B-Weight: 23,200 lbs / 10523 kg		
<b>Materials:</b>	Fire retardant vinyl ester resin / fiberglass (10 year warranty against osmosis blistering) Stainless steel hook mechanism and stainless steel structural yoke frame		
<b>Hook:</b>	Single hook, Lift-Over-Center Design, on-load & off-load release functions USCG Hook Approval No. 160.133/66/0. Complies with the LSA code as amended by MSC.320(89) No hydrostatic locking device.		
<b>Windows:</b>	Fire resistance safety glass, hinged opening window for helmsman		
<b>Single Cable:</b>	Torque balanced non-rotating 26mm diameter wire cable		
<b>Self Righting:</b>	Positive balance stability GZ-Curve, 190+ cubic feet of hull buoyancy		
<b>Electrical Sys:</b>	12V DC dual battery circuit, solar panel trickle charger		
<b>Air System:</b>	Self-contained air support system, 3,000 psi / 1,194 CF providing 10+ mins of breathable air Composite air cylinders, (Optional H <sub>2</sub> S breathable air system kit)		
<b>Other Kits:</b>	EPIRB   *Radio Communications Equipment   Integrated Sprinkler System   *Dehumidifier Kit   (*optional) Man Overboard Recovery Kit   *Stretcher & Stretcher Supports   Radar Reflector   Fender Kit   Strobe Light & Search Light   *120V AC Power System   *Fire Suppression System   and more...		

### ENGINE DATA

<b>Manufacturer:</b>	BUKH	<b>Fuel Tank Capacity:</b>	60+ gallons
<b>Model:</b>	BBV 2203 marine diesel engine	<b>Standard Fuel Range:</b>	24 hours
<b>Horsepower:</b>	48 @ full 3,000 RPM	<b>Cooling System:</b>	Keel cooler & heat exchanger
<b>Max. Speed:</b>	6 knots	<b>Start System:</b>	Dual battery electric start (optional secondary hydraulic starter)
<b>Propeller:</b>	24" bronze, 3-bladed, propeller guard		

### CONTACT INFO

For additional information please contact us:

Western Hemisphere: 931 Industry Road PO Box 1567 Kenner, LA 70062 Ph: +1 504-469-4545

Eastern Hemisphere: Viking Road Gapton Hall, Industrial Estate Great Yarmouth, Norfolk, NR31 0NU England Ph: +44 1493 659411

Corporate Headquarters and Manufacturing: 34140 Valley Center Road - Valley Center, CA 92082 Ph: +1 760-749-6800

Survival Systems International has been approved to the provisions set forth by **ISO 9001:2008 AS9100** Rev C



[www.survivalsystemsinternational.com](http://www.survivalsystemsinternational.com)



760.749.6800

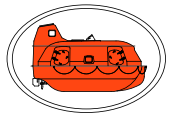


[info@ssivc.com](mailto:info@ssivc.com)

Survival Systems International is proud to be "Your Partner in Safety"

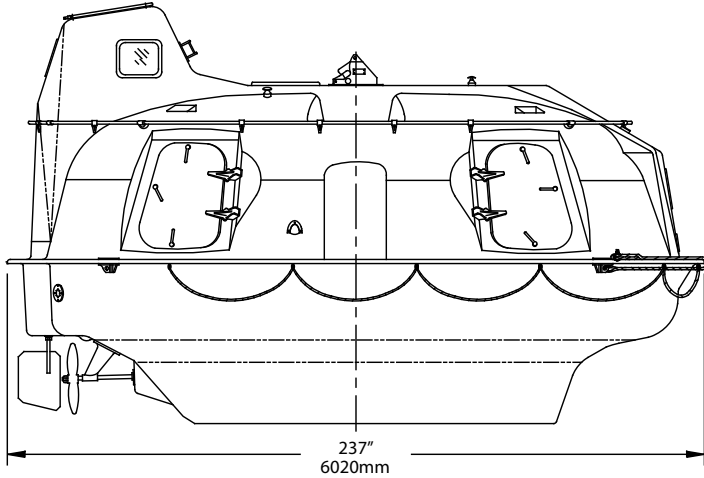
# TECHNICAL DATA SHEET OFFSHORE CAPSULE CA6000

SURVIVAL  
SYSTEMS  
INTERNATIONAL

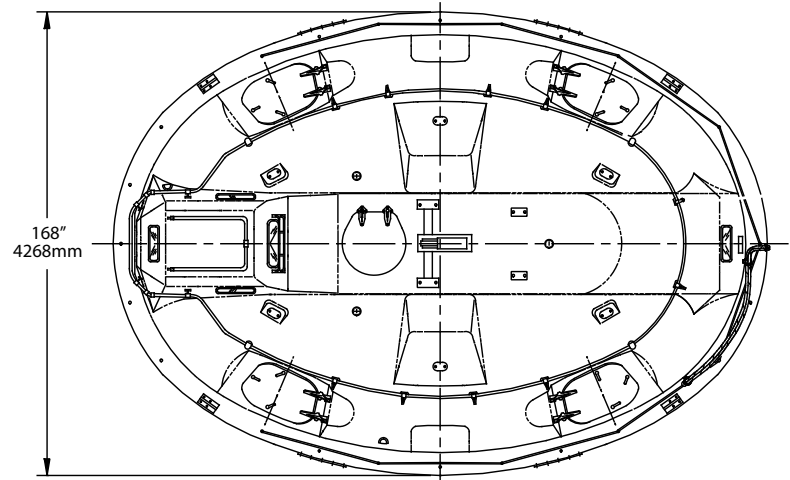


LIFEBOAT MANUFACTURING SINCE 1968 / DESIGNED FOR THE OIL AND GAS INDUSTRY / SAFELY EVACUATED OVER 2,200 PERSONNEL

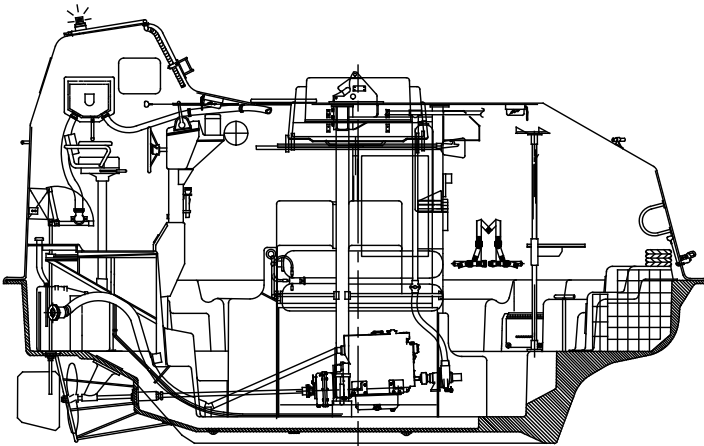
## CA6000 Survival Capsule (Totally Enclosed Motor Propelled Survival Craft)



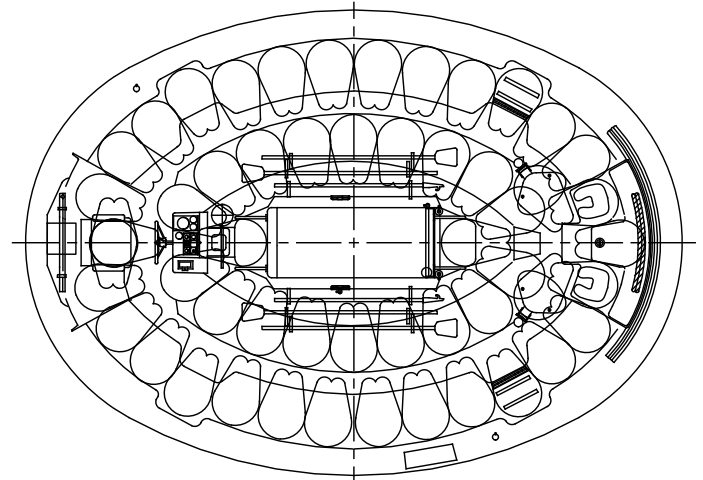
ELEVATION LOOKING PORT



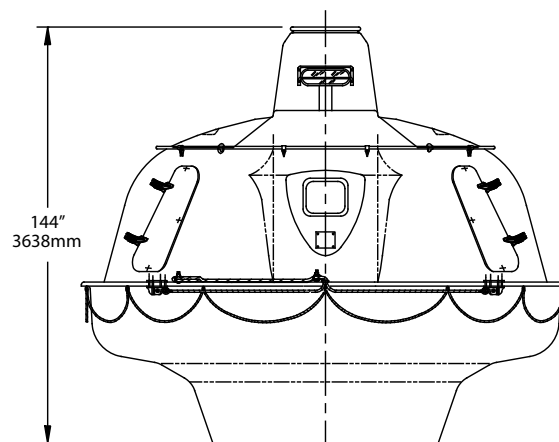
TOP VIEW



INTERIOR VIEW



SEATING ARRANGEMENT



ELEVATION LOOKING AFT



[www.survivalsystemsinternational.com](http://www.survivalsystemsinternational.com)



760.749.6800

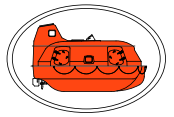


[info@ssivc.com](mailto:info@ssivc.com)

Survival Systems International is proud to be "Your Partner in Safety"

# TECHNICAL DATA SHEET HOLD & LAUNCH PLATFORM PL5002

**SURVIVAL  
SYSTEMS  
INTERNATIONAL**



LIFEBOAT MANUFACTURING SINCE 1968 / DESIGNED FOR THE OIL AND GAS INDUSTRY / SAFELY EVACUATED OVER 2,200 PERSONNEL

## PL5002 Platform for use with SSI CA6000 Survival Capsule

### PLATFORM INFO

<b>Approvals/ Compliance:</b>	SOLAS USCG Approval No. 160.132/96/0 Individually inspected by ABS on behalf of USCG Proudly manufactured in the USA
<b>Dimensions:</b>	223" x 202" x 176" (inches) / 5664 x 5130 x 4470 (mm)
<b>Weight:</b>	8,345 lbs / 3785 kg
<b>Interface:</b>	SSI Capsule (CA6000) stowed securely, with walkway access to doors for boarding SSI Winch (W5000) mounted to platform directly above capsule Complete wire schematics for all electrical interfaces Ladder, guardrails, safety gate, kick-plates all in compliance with industry standards Grating available in galvanized steel or phenolic compound



### LOAD DIAGRAM & CALCULATION

$$V = \Sigma W = 33,525 \text{ lbs (15,207 kg)}$$

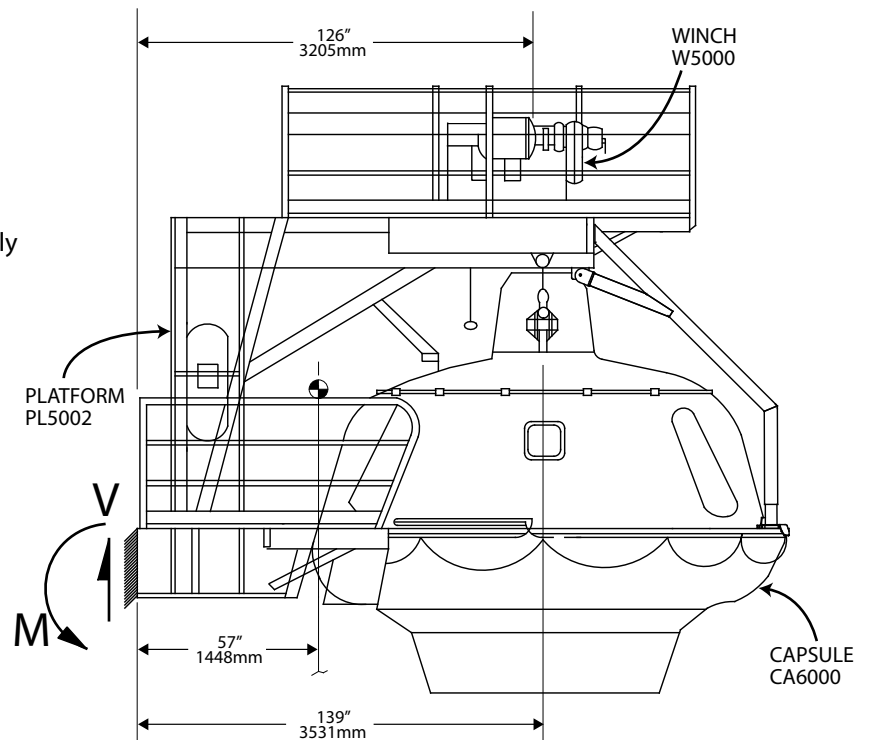
$$M = \Sigma WX = 3.92 \times 10^6 \text{ lbs}$$

At platform interface (45,185 kg M)

Shear and moment distributed equally  
between RH and LH Beams

$$V_{\text{MAX}} \text{ RH} = 16,763 \text{ lbs (7,604 kg)}$$

$$M_{\text{MAX}} \text{ RH} = 1.96 \times 10^6 \text{ lbs (22,593 kg M)}$$



### CONTACT INFO

For additional information please contact us:

Western Hemisphere: 931 Industry Road PO Box 1567 Kenner, LA 70062 Ph: +1 504-469-4545

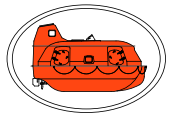
Eastern Hemisphere: Viking Road Gapton Hall, Industrial Estate Great Yarmouth, Norfolk, NR31 0NU England Ph: +44 1493 659411

Corporate Headquarters and Manufacturing: 34140 Valley Center Road - Valley Center, CA 92082 Ph: +1 760-749-6800

SSI has been assessed for conformance with the provisions set forth by **ISO 9001:2008 AS9100** Rev C

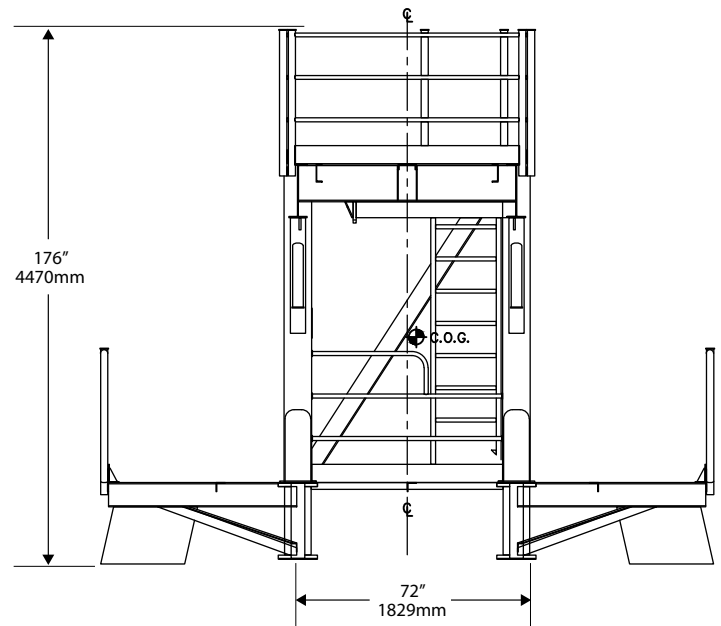
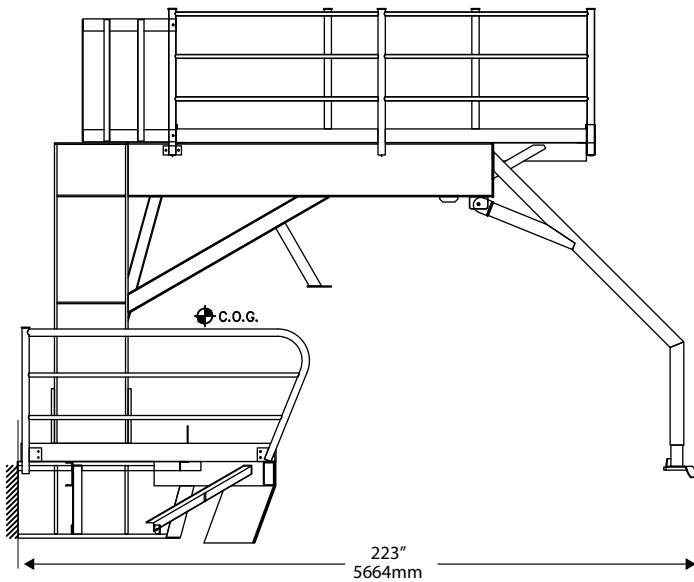
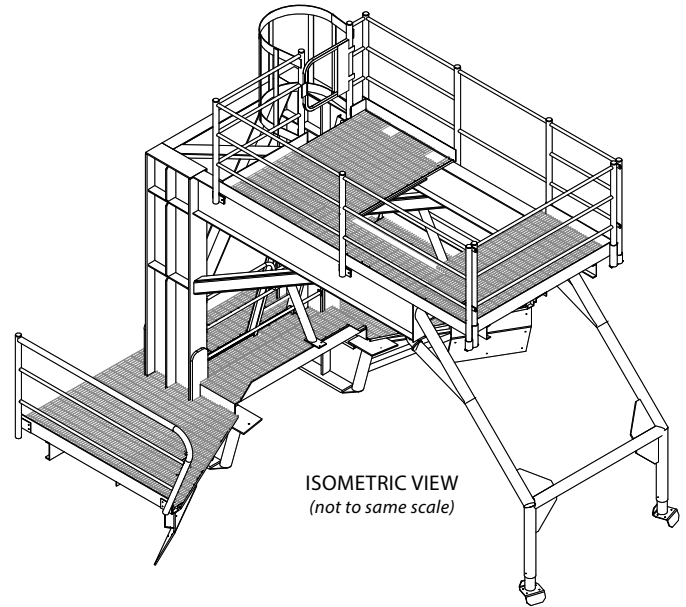
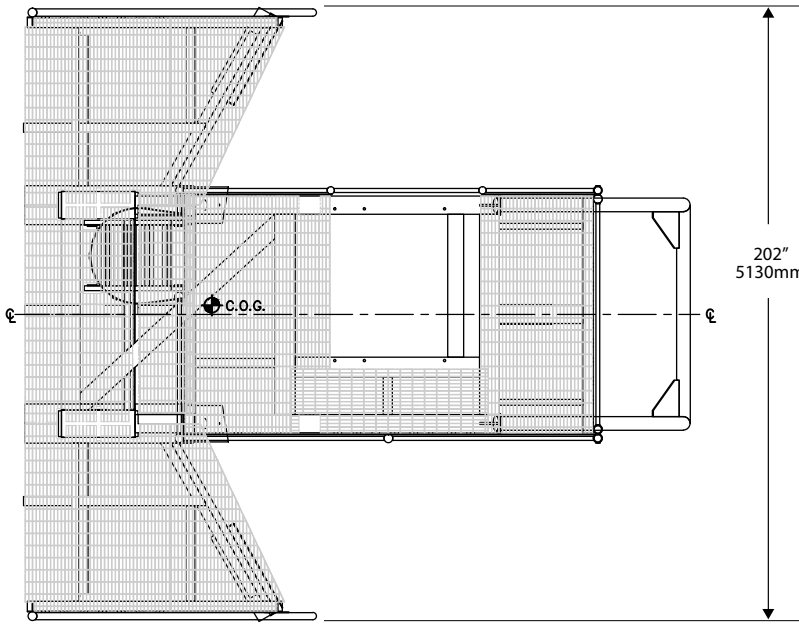
# TECHNICAL DATA SHEET HOLD & LAUNCH PLATFORM PL5002

SURVIVAL  
SYSTEMS  
INTERNATIONAL



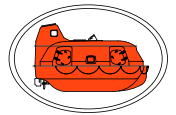
LIFEBOAT MANUFACTURING SINCE 1968 / DESIGNED FOR THE OIL AND GAS INDUSTRY / SAFELY EVACUATED OVER 2,200 PERSONNEL

## PL5002 Platform for use with SSI CA6000 Survival Capsule



# TECHNICAL DATA SHEET OFFSHORE WINCH W5000

SURVIVAL  
SYSTEMS  
INTERNATIONAL



LIFEBOAT MANUFACTURING SINCE 1968 / DESIGNED FOR THE OIL AND GAS INDUSTRY / SAFELY EVACUATED OVER 2,200 PERSONNEL

## W5000 Winch for use with SSI CA6000 Survival Capsule

### WINCH DATA

**Approvals/ Compliance:** SOLAS  
USCG Approval No. 160.115/3/1  
Individually inspected by ABS on behalf of USCG  
Proudly manufactured in the USA



*Standard Winch (model -104)*

**Dimensions:** 52" x 64" x 50" (inches) / 1321 x 1625 x 1270 (mm)

**Winch Weight:** 4,290 lbs / 1946 kg

**Drum Capacity:** Fall Wire: 130 feet / 39.6 m

**SWL:** 23,200 lbs / 10523 kg

*Long Drum Winch (model -105)*

**Dimensions:** 52" x 74" x 50" (inches) / 1321 x 1880 x 1270 (mm)

**Winch Weight:** 5,500 lbs / 2495 kg

**Drum Capacity:** Fall Wire: 180 feet / 54.9 m

**SWL:** 23,200 lbs / 10523 kg

### SPECIFICATIONS

**Cable:** Single cable system, Torque balanced non-rotating 26mm diameter wire cable

**Lowering:** (@ Full Load) 245 ft per minute / 75 meters per minute (1.25 meters per second)

**Retrieval:** 53 ft per minute / 16.1 meters per minute (Lifeboat)  
60 ft per minute / 18.3 meters per minute (Rescue boat)

**Winch Motor:** Totally enclosed explosion proof, with space heater  
230/460 VAC 60Hz 25HP (capable of 190/380 VAC 50 Hz 20HP)  
Rated: Class I Div 2 Group D | T3C | NEMA 4, 7, & 9 | UL E10822

**Controls:** Totally enclosed explosion proof motor starter, control voltage 120VAC  
Rated: Class I Div 2 Group D | NEMA 4, 4X, 7CD | UL 508 UL 698 UL E84577  
Integrated limit switches prevent over lifting

**Additional:** Grooved drum, single wrap  
Pull-and-Go brake design  
Hand pay out wheel with moving part safety cover

### CONTACT INFO

For additional information please contact us:

Western Hemisphere: 931 Industry Road PO Box 1567 Kenner, LA 70062 Ph: +1 504-469-4545

Eastern Hemisphere: Viking Road Gapton Hall, Industrial Estate Great Yarmouth, Norfolk, NR31 0NU England Ph: +44 1493 659411

Corporate Headquarters and Manufacturing: 34140 Valley Center Road - Valley Center, CA 92082 Ph: +1 760-749-6800

Survival Systems International has been approved to the provisions set forth by **ISO 9001:2008 AS9000** Rev C



[www.survivalsystemsinternational.com](http://www.survivalsystemsinternational.com)



760.749.6800



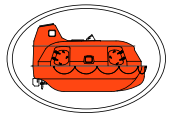
[info@ssivc.com](mailto:info@ssivc.com)

Survival Systems International is proud to be "Your Partner in Safety"



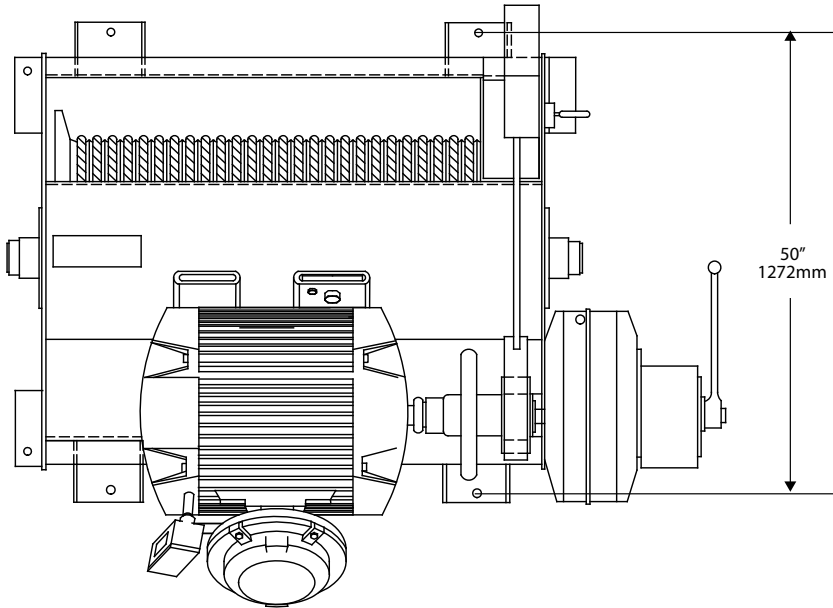
# TECHNICAL DATA SHEET OFFSHORE WINCH W5000

SURVIVAL  
SYSTEMS  
INTERNATIONAL

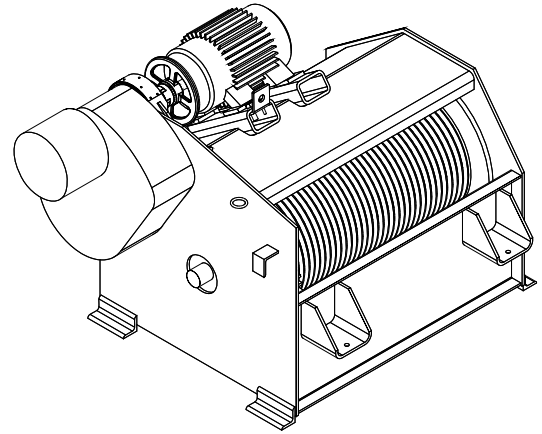


LIFEBOAT MANUFACTURING SINCE 1968 / DESIGNED FOR THE OIL AND GAS INDUSTRY / SAFELY EVACUATED OVER 2,200 PERSONNEL

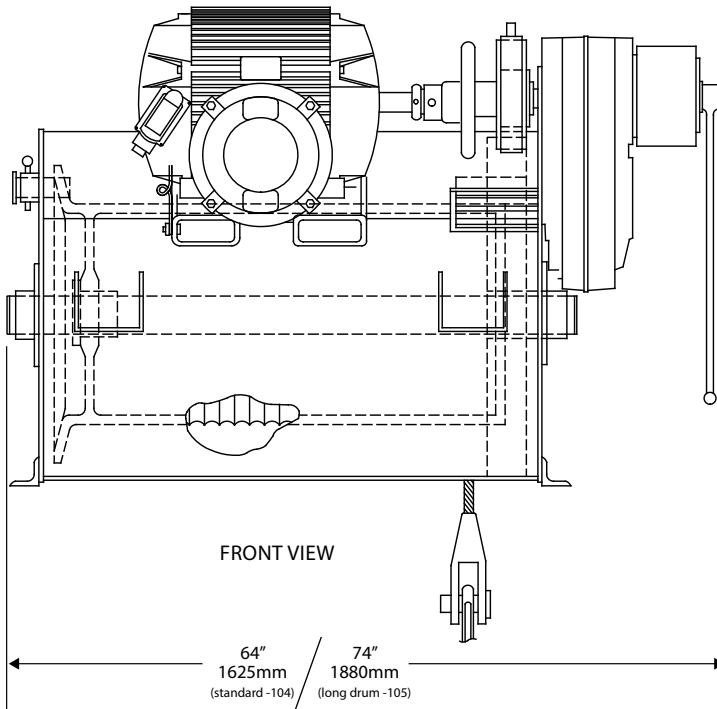
## W5000 Winch for use with SSI CA6000 Survival Capsule



TOP VIEW

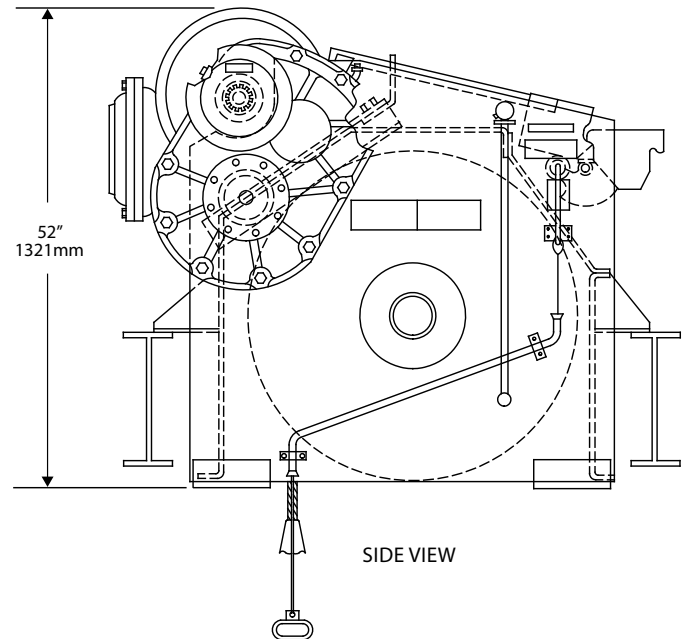


ISOMETRIC VIEW  
*(not to same scale)*



FRONT VIEW

64" / 74"  
1625mm / 1880mm  
*(standard -104) / (long drum -105)*



SIDE VIEW



[www.survivalsystemsinternational.com](http://www.survivalsystemsinternational.com)



760.749.6800

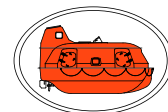


[info@ssivc.com](mailto:info@ssivc.com)

Survival Systems International is proud to be "Your Partner in Safety"

# REPLACEMENT PROGRAM WHITTAKER 14-MAN CAPSULE

SURVIVAL  
SYSTEMS  
INTERNATIONAL



LIFEBOAT MANUFACTURING SINCE 1968 / DESIGNED FOR THE OIL AND GAS INDUSTRY / SAFELY EVACUATED OVER 2,200 PERSONNEL

## SSI CA1401 Survival Capsule (Totally Enclosed Motor Propelled Survival Craft)

### CAPSULE DATA

<b>Quality:</b>	SSI is approved to the provisions set forth by <b>ISO 9001:2008 AS9100</b>
<b>Approvals/ Compliance:</b>	USCG Lifeboat Approval No. 160.035/474/7 Individually inspected by ABS on behalf of USCG Proudly manufactured in the USA
<b>Capacity:</b>	14 passengers Access through two water-tight hinged doors and a top hatch for access to hook
<b>Dimensions:</b>	134.5" x 134.5" x 92.75" (inches) / 3416 x 3416 x 2356 (mm)
<b>Weights:</b>	Condition A-Weight: 2,810 lbs / 1274 kg      Condition B-Weight: 5,483 lbs / 2487 kg
<b>Materials:</b>	Fire retardant vinyl ester resin / fiberglass (10 year warranty against osmosis blistering)
<b>Hook:</b>	Single hook, Lift-Over-Center Design, on-load & off-load release functions Hook Model 510-111 (approval #160.033/75/0) approved for replacement in kind No hydrostatic locking device.
<b>Windows:</b>	Fire resistance safety glass
<b>Single Cable:</b>	Torque balanced non-rotating 19mm diameter wire cable
<b>Electrical Sys:</b>	12v dc solar panel trickle charger
<b>Other Optional Kits:</b>	EPIRB   SART   VHF radio   strobe light & search light   and more...
<b>Boarding Line:</b>	New boarding line material; service life of 5 years
<b>Exhaust:</b>	New design allows for service access to exhaust systems from within capsule in stowed position Eliminates the need to place capsule to desk for exhaust maintenance



### ENGINE DATA

<b>Engine:</b>	New 2 Cylinder Diesel, Model Bukh DV24RME Efficient 4 stroke, 24HP engine replaces the now obsolete Farymann R-30 engine Many existing 14-passenger capsules have older engines with critical parts that are unavailable		
<b>Horsepower:</b>	24 @ 3,600 rpm	<b>Max. Speed:</b>	4 knots
<b>Propeller:</b>	18" bronze, 3-bladed, propeller guard	<b>Standard Fuel Range:</b>	24 hours at full power
<b>Fuel Capacity:</b>	26.5 gallons		
<b>Cooling System:</b>	Keel cooler & heat exchanger		
<b>Start System:</b>	Electric start		

### CONTACT INFO

For additional information please contact us:

Western Hemisphere: 931 Industry Road PO Box 1567 Kenner, LA 70062 Ph: +1 504-469-4545

Eastern Hemisphere: Viking Road Gapton Hall, Industrial Estate Great Yarmouth, Norfolk, NR31 0NU England Ph: +44 1493 659411

Corporate Headquarters and Manufacturing: 34140 Valley Center Road - Valley Center, CA 92082 Ph: +1 760-749-6800



[www.survivalsystemsinternational.com](http://www.survivalsystemsinternational.com)



760.749.6800

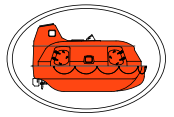


[info@ssivc.com](mailto:info@ssivc.com)

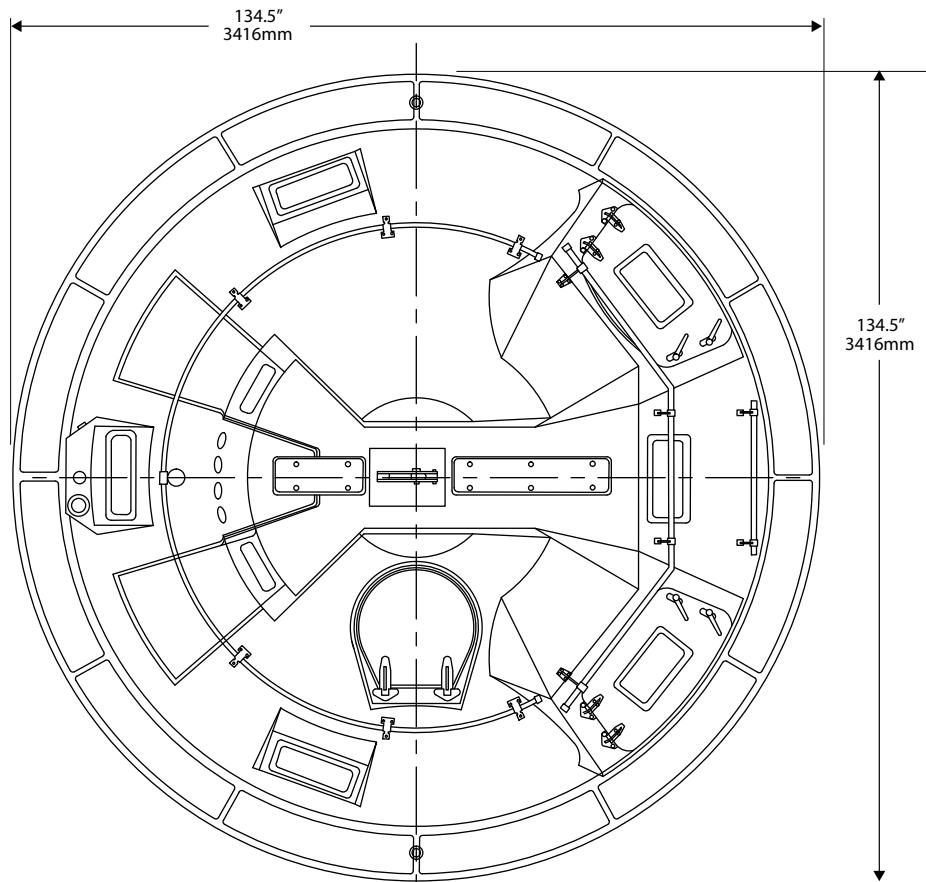
Survival Systems International is proud to be "Your Partner in Safety"

# REPLACEMENT PROGRAM WHITTAKER 14-MAN CAPSULE

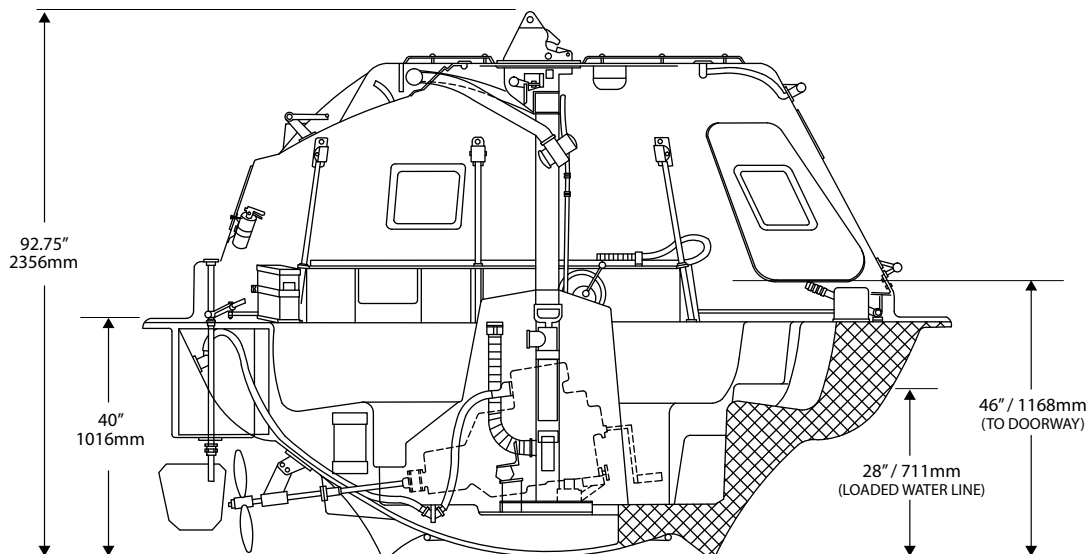
SURVIVAL  
SYSTEMS  
INTERNATIONAL



LIFEBOAT MANUFACTURING SINCE 1968 / DESIGNED FOR THE OIL AND GAS INDUSTRY / SAFELY EVACUATED OVER 2,200 PERSONNEL



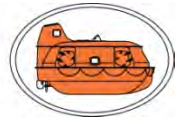
TOP VIEW



STBD VIEW

# Capsule Assembly

SURVIVAL  
SYSTEMS  
INTERNATIONAL



SSI Capsules proceed down the assembly line, starting in the foreground as several open laminate shapes and ending up in the distance background as fully completed capsules.

Shown in the image are several different models of the Survival Systems Capsules: ranging from the smaller 21 man systems to the larger 60 man capsules.

**Your Partner in Safety. ISO 9001:2008, AS9100. Made in the USA.**

# Testing Capsules

SURVIVAL  
SYSTEMS  
INTERNATIONAL

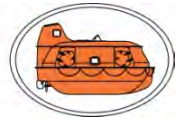


Each and every capsule that leaves the SSI Manufacturing facility is fully tested and certified for functional operations. Shown here is a lifeboat in the Test Tank, performing the 3-hours engine testing (unique to the SSI high quality standards) and the sprinkler testing.

**Your Partner in Safety. ISO 9001:2008, AS9100. Made in the USA.**

# Installing Air System

SURVIVAL  
SYSTEMS  
INTERNATIONAL



Trained technicians install the hundreds of sub-assemblies that go into a complete lifeboat. Shown here, the self-contained air system – used for both crew breathing and engine intake – is being configured with its regulators and hose systems.

Did you know, each SSI Capsule has enough self-contained air to run for at least 10 minutes? This regulatory requirement allows for enough air-time to safely evacuate the emergency area.

**Your Partner in Safety. ISO 9001:2008, AS9100. Made in the USA.**

# Vinyl Ester Resin Fiberglass

SURVIVAL  
SYSTEMS  
INTERNATIONAL



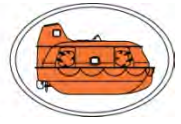
Survival Systems International uses Vinyl Ester Resin in all our laminate molds. Marine quality fiberglass with fire-retardant fibers are sprayed into the capsule shaped molds. State-of-the-art dedicated rooms provide a temperature-controlled space and proper ventilation for this critical process.

SSI offers a 10 year warranty against laminate blistering.

**Your Partner in Safety. ISO 9001:2008, AS9100. Made in the USA.**

# Dome and Hull

SURVIVAL  
SYSTEMS  
INTERNATIONAL



Shown here, a crane is gently lowering the finished dome component onto the finished hull component. The final assembly is both bolted and bonded together, forming the strong outer shell and flange of the SSI Capsule.

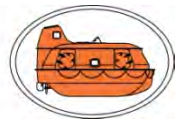
The curved (oval) shape of the Survival Systems Capsule is over 370% stronger when compared to the flat (straight) sides of a traditional lifeboat.

**Your Partner in Safety. ISO 9001:2008, AS9100. Made in the USA.**



# Certified Welding / Testing

SURVIVAL  
SYSTEMS  
INTERNATIONAL



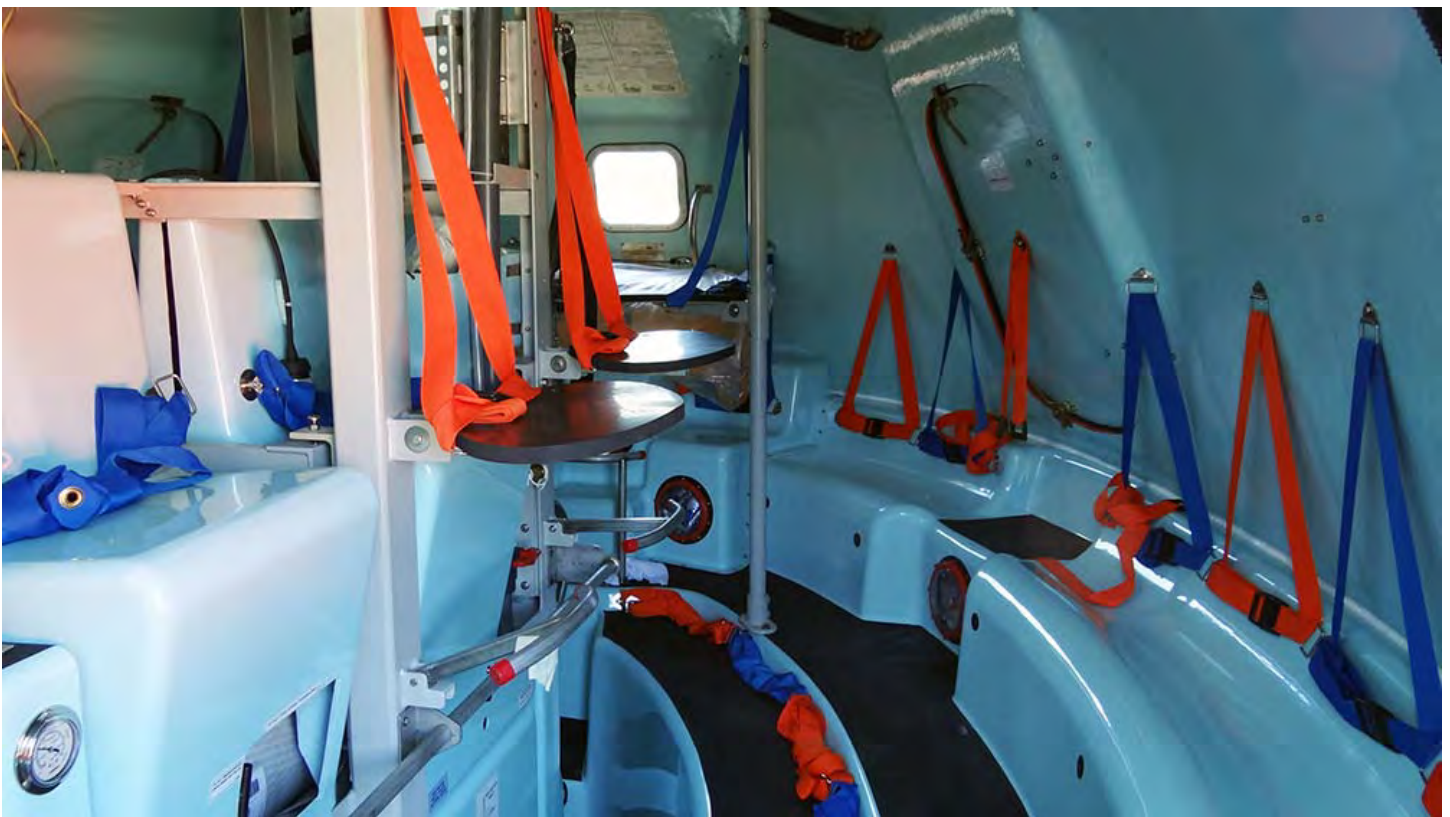
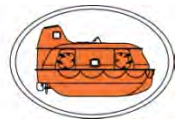
Survival Systems International's manufacturing facility (California, USA) has a dedicated weld shop for fabricating components for the SSI capsules, winches, platforms and hook components.

Certified welders are trained and experienced in various types of welds, to meet the design and structural strength needs defined on the engineering drawings.

**Your Partner in Safety. ISO 9001:2008, AS9100. Made in the USA.**

# Seating and Interior Space

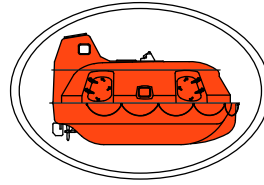
SURVIVAL  
SYSTEMS  
INTERNATIONAL



The outward curved interior of the oval shaped SSI capsule provides extra back and shoulder space for seating. All crew and passengers have dedicated 4-point adjustable seatbelts, and a coordinating seating chart to assist with ease of boarding during an emergency (or training).

**Your Partner in Safety. ISO 9001:2008, AS9100. Made in the USA.**

# SURVIVAL SYSTEMS INTERNATIONAL



Contact us for more information:

Corporate Headquarters and Manufacturing:

**Ph: +1 760-749-6800** [hq@ssivc.com](mailto:hq@ssivc.com)

34140 Valley Center Road, Valley Center, CA 92082

Western Hemisphere:

**Ph: +1 504-469-4545** [info@ssinola.com](mailto:info@ssinola.com)

931 Industry Road, New Orleans, LA 70062

Eastern Hemisphere:

**Ph: +44 1493 659411** [info@ssiuk.net](mailto:info@ssiuk.net)

Viking Road Gapton Hall - Industrial Estate Great  
Yarmouth, Norfolk, NR31 0NU England