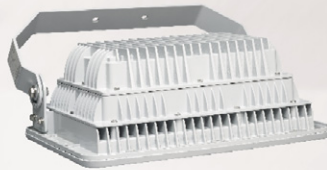


**Hazardous Area LED Lighting**  
Champ® FMV hi-lumen LED floodlights

**CROUSE-HINDS**  
SERIES

# Champ® FMV

Hi-lumen LED floodlights for hazardous areas



**EATON**

*Powering Business Worldwide*



# Champ<sup>®</sup> FMV floodlights

# Safe. Reliable. Efficient.

Eaton's Crouse-Hinds offers the broadest portfolio of LED luminaires for any industrial or hazardous application.

We utilize more than 100 years of lighting expertise to maximize the benefits of LED technology and provide the safest, [most reliable LED luminaires on the market today](#).



## Why LED?

### Useful life

- Economic life is up to 100,000 hours of maintenance-free and safe operation

### Energy efficiency

- LED average energy consumption is up to 65% less than HID and 85% less than incandescent

### Start/restart time

- Instant illumination compared to 10 minute restrike time for HID

### Light quality

- Higher color rendering and color temperature compared to HID

### Environmental benefits

- LED reduces carbon footprint
- Mercury-free

## Why Crouse-Hinds?

### Industry-best reliability

- Built to withstand extreme temperatures, vibration, water and dust

### Thermal management

- Effective heat sinking ensures longer life

### Quality of light

- Custom optics designed to maximize light distribution and intensity

### Retrofit compatibility

- LED fixtures are compatible with Crouse-Hinds' HID installed base

## Why Champ FMV LED?



- 65% less energy used than HID
- Over 100,000 hours of continuous operation

## Application

### Challenge:

You run a 50 year old facility with floodlights from several manufacturers of different types and wattages.

### Old way:

Regular maintenance is required to replace burned out lamps and failed ballasts. You stock several of each type but are finding it difficult to purchase some types and are replacing mercury vapor fixtures with metal halide and high pressure sodium. Workers complain about lamp replacement and the color of HPS.

### New way:

Standardize on Champ FMV Series Floodlights. When a lamp or ballast gear burns out, replace the fixture with a Champ, or retrofit complete areas one at a time. Workers immediately notice the crisp, white light and can more safely and effectively complete their tasks thanks to the "no lights out" feature. Energy costs drop instantly.

### Benefit:

Inventory decreases tens of thousands of dollars in fixtures and replacements. Your large storage area reduces to only a few drivers on a shelf. Energy usage is cut in half, reducing the plant's energy cost due to lighting 30% of the overall energy budget down to 15%. Workers are more productive in a safer environment, and less money is wasted on maintenance work so that more money can be spent on the task at hand.



# Design features



## HIGH LUMEN OUTPUT

- High efficiency drivers and LEDs provide 100 LPW output for reliable, low cost operation in harsh and heavy industrial applications

## VERSATILE DESIGN

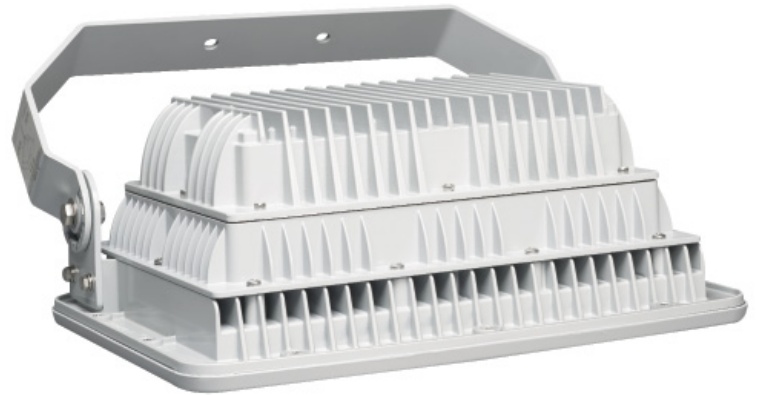
- Can be used for outdoor or indoor applications, and for a wide range of mounting heights depending on model and light level requirement
- Replaceable drivers and LEDs for ease of maintenance and "no lights out" feature

## MULTIPLE LENS OPTIONS

- Tempered and clear glass standard
- Polycarbonate and diffused glass lens options available

## FULL-FRAME YOKE

- Designed to utilize the SFA6 slipfitter and SWB6 wall mount bracket, making it ideal for retrofit or new installations



## RUGGED HEAT SINK

- Heat sink designed to perform in high ambient temperatures up to +55°C and as low as -40°C
- Thick walled castings make for a tough, rugged housing that keeps the internal driver and LED temperature down



FMV25L - 25,000 lumen model

# Features & specifications

## Champ FMV Series LED Floodlights

Champ FMV Series LED Floodlights are designed to provide full-spectrum, crisp, white light. Two versions of the Champ are available, 25,000 and 50,000 lumens, providing ideal solutions for a wide range of applications.

### Applications:

- High lumen output for installation in high mounting heights
- Oil and gas refineries, drilling rigs, petrochemical facilities, food and beverage facilities, platforms, loading docks, tunnels, outdoor wall and stanchion mounted general area lighting, and where flammable vapors, gases, ignitable dusts, fibers or flyings are present
- Locations requiring continuous and consistent light levels
- Areas requiring frequent on-and-off of lights
- Locations requiring continuous and consistent light levels in extreme ambient temperatures
- Where extremely corrosive, wet, dusty, hot and/or cold conditions exist; Type 4X, marine, wet locations and hose-down environments
- Classified and hazardous locations

### LED system:

- Cool white (5000K, 67 CRI)
- Advanced heat sink design ensures LED does not exceed manufacturer's temperature ratings across all specified ambient conditions
- LM-79, LM-80 reports available upon request

### Champ FMV LED benefits:

- Instant illumination and restrike
- Better visibility with crisp, white light
- Cold temperature operation / no warm-up required
- Redundancy in drivers with multiple series circuits connected to each driver to avoid complete loss of illumination
- Easy installation - yoke design to mount to SFA6
- Energy-efficient technology - up to 65% energy savings over HID fixtures
- Provides up to 100,000 hours of life - eliminates need for frequent lamp replacement
- Contains no mercury or other hazardous substances
- Shock- and vibration-resistant solid-state luminaires have no filaments or glass components that could break - greatly reduces the risk of premature failure
- Operating ambient -40°C to +55°C
- DesignLights® Consortium compliant for utility rebates \*
- 5 year fixture warranty†



†Refer to page 2 of the D-0914 authorized distributor price book for Crouse-Hinds standard Terms and Conditions.

\* Approved models include: FMV25LCYUNV1 76, FMV25LCYUNV34 76, FMV50LCYUNV1 76, FMV50LCYUNV34 76,

Refer to [www.designlights.org](http://www.designlights.org) Qualified Products List under family models for full listing details. Not all models are approved for all application categories.

### Certifications and compliances:

- Class I, Division 2, Groups A, B, C, D
- Class II, Division 1, Groups, E F, G
- Type 4X, IP66
- UL844; UL1598; UL1598A
- CSA C22.2 No. 137



FMV25L -  
25,000 lumen model

Model number	Nominal lumens	Wattage	Equivalent HID luminaire	Typical energy savings/lifetime
FMV25L	26,240 (7x6)	263	750-1000W	Up to 65% energy savings and over 100,000 hours of continuous operation!
	32,041 (3x3)			
FMV50L	53,890 (7x6)	531	1500W	
	64,082 (3x3)			

### Effective projected area (EPA):

	FMV25L	FMV50L
Maximum EPA	2.80	6.00

### Electrical ratings:

	FMV25L	FMV50L
Input power (watts)	263	531
Input amps at 120-277 VAC	0.70 - 2.80	1.40 - 5.60
Voltage range, VAC	120-277V, 277-480V @ 50/60 Hz	
Voltage range, VDC	127-250V	
Power factor	>0.90	

### Drivers:

Option	25L & 50L
/UNV1	90-305 VAC, 50/60 Hz; 127-250 VDC
/UNV34	277-480 VAC, 50/60 Hz

### Weights:

Model number	Lbs.	Kg.
FMV25L	52.00	23.59
FMV50L	106.00	48.08





FMV50L -  
50,000 lumen model

#### Standard materials:

- Lamp housing and adapter - die cast aluminum with Corro-free™ epoxy powder coat
- Lens - heat- and impact-resistant glass
- Gaskets - silicone
- External hardware - stainless steel
- Factory-sealed, no external seals required

#### Accessories (ordered separately):

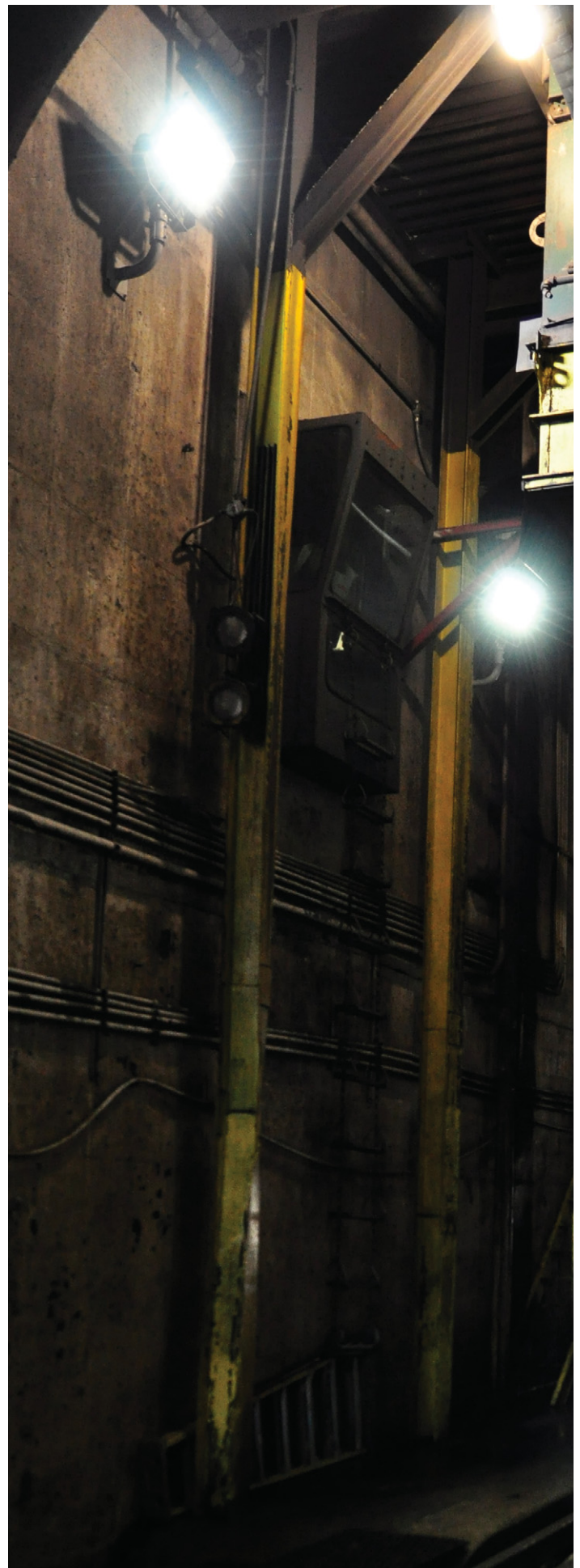
	<u>Model number</u>
• Bolt-on visor .....	<b>DSV1</b>
• Bolt-on wire guard .....	<b>P61</b>
• Floodlight slipfitter .....	<b>SFA6*</b>
• Slipfitter wall mount adapter .....	<b>SWB6*</b>
• Safety cable .....	<b>SC30H†</b>

\* Available with FMV25L model only.

† FMV50L requires two safety cables.

#### Options (add suffix to model number):

	<u>Suffix</u>
• Two conduit/cable glands of like thread installed .....	<b>S886</b>
• Diffused glass lens .....	<b>S891</b>
• Polycarbonate lens .....	<b>S903</b>



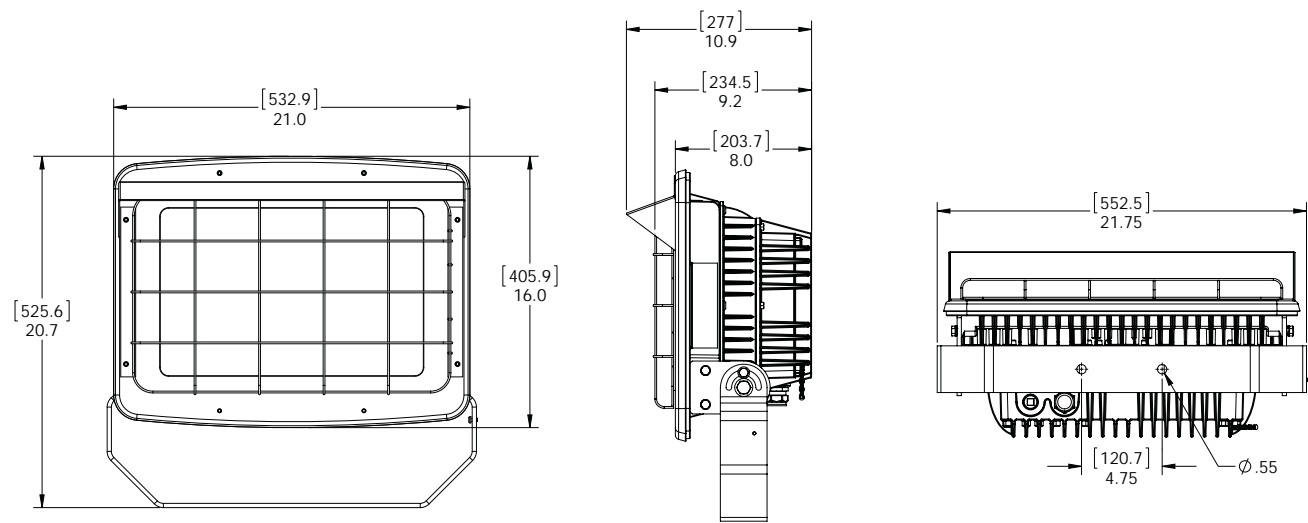
# Ordering information

Part number example  
FMV25LCY/UNV1 76 S886

FMV 25L C Y /UNV1 76 S886

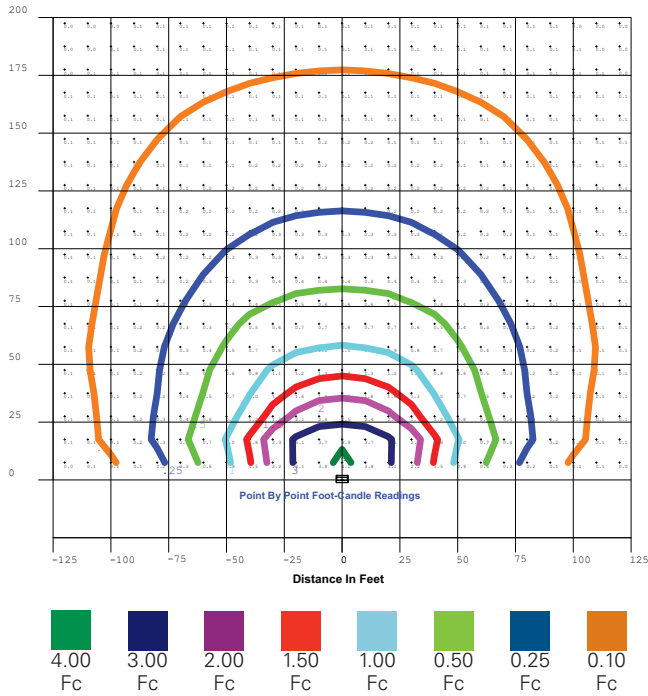
Model	Options
FMV NEC model	S886 Two conduit/cable glands of like thread installed
	S891 Diffused glass lens
	S903 Polycarbonate lens
Light source/intensity	Entries
25L 26,240 nominal lumens, 263 watts (7x6)	BLANK ¾" NPT
50L 53,890 nominal lumens, 531 watts (7x6)	
Color temperature	Optical distribution
C 5000K (cool white)	76 7x6 floodlight pattern optics
	33 3x3 floodlight pattern optics
Mount	Voltage
Y Yoke	/UNV1 90 to 305 VAC 50/60 Hz; 127 to 250 VDC
	/UNV34 277 to 480 VAC 50/60 Hz

## Dimensions - FMV25L



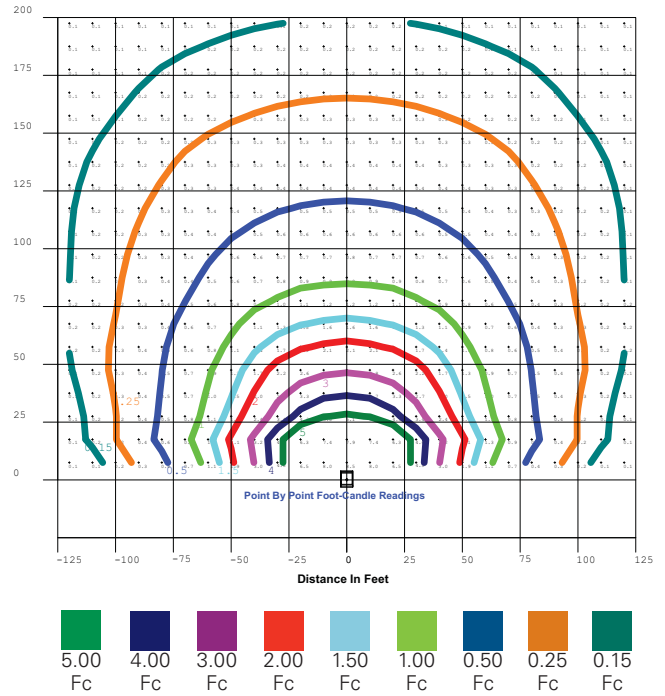
# Photometric data

**FMV25LCY/UNV176 Height: 50 ft.**



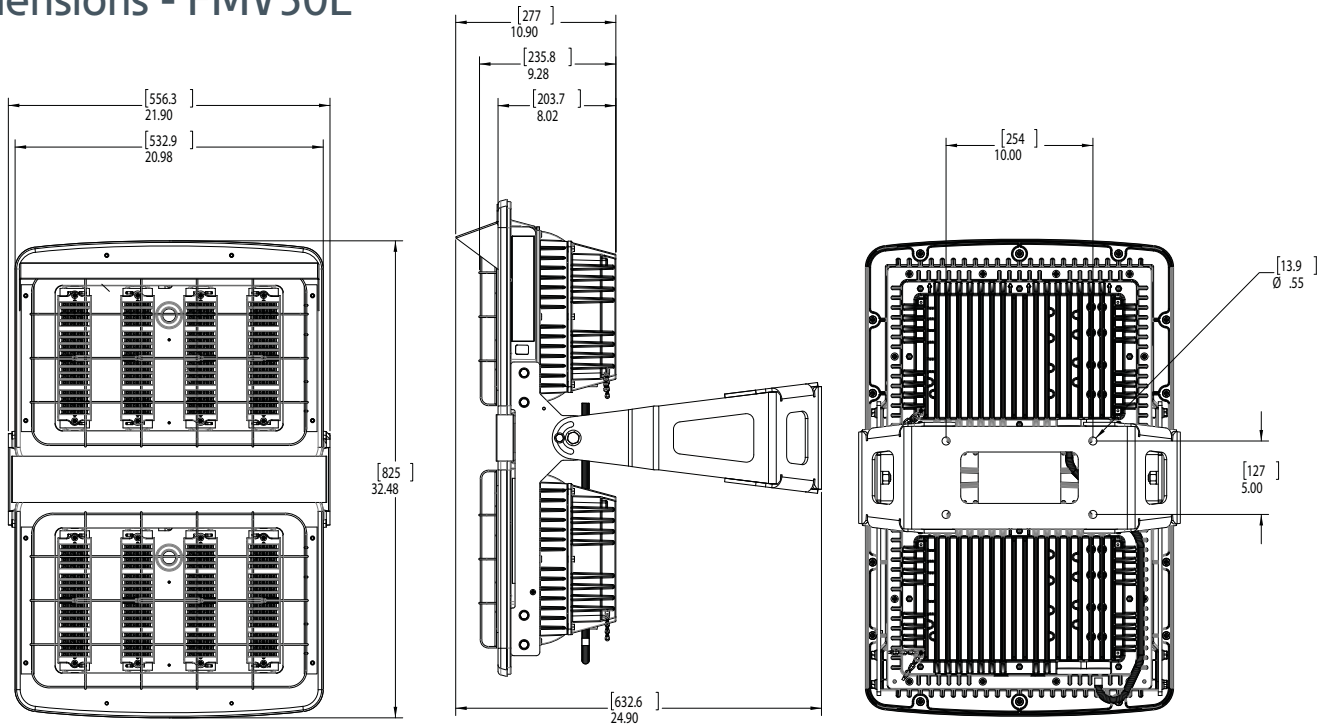
Model number	Nominal lumens	Wattage	Equivalent HID luminaire
FMV25L	26,240	263	750W

**FMV50LCY/UNV176 Height: 50 ft.**



Model number	Nominal lumens	Wattage	Equivalent HID luminaire
FMV50L	53,890	531	1000-1500W

## Dimensions - FMV50L



**U.S. (global headquarters):  
Eaton's Crouse-Hinds Division**

1201 Wolf Street  
Syracuse, NY 13208

(866) 764-5454  
FAX: (315) 477-5179  
FAX Orders Only:  
(866) 653-0640

[crousecustomerctr@eaton.com](mailto:crousecustomerctr@eaton.com)

**For more information:**

If further assistance is required, please contact an authorized Eaton Distributor, Sales Office, or Customer Service Department.

**Canada**

Toll Free: 800-265-0502  
FAX: (800) 263-9504  
FAX Orders only: (866) 653-0645

**Mexico/Latin America/Caribbean**

52-555-804-4000  
FAX: 52-555-804-4020  
[ventascentromex@eaton.com](mailto:ventascentromex@eaton.com)

**Europe (Germany)**

49 (0) 6271 806-500  
49 (0) 6271 806-476  
[sales.CCH.de@cooperindustries.com](mailto:sales.CCH.de@cooperindustries.com)

**Middle East (Dubai)**

971 4 8066100  
FAX: 971 4 8894813  
[chmesales@eaton.com](mailto:chmesales@eaton.com)

**Singapore**

65-6645-9888  
FAX: 65-6297-4819  
[chsi-sales@cooperindustries.com](mailto:chsi-sales@cooperindustries.com)

**China**

86-21-2899-3600  
FAX: 86-21-2899-4055  
[cchsales@cooperindustries.com](mailto:cchsales@cooperindustries.com)

**Korea**

82-2-3484-6783  
82-2-3484-6778  
[CCHK-sales@cooperindustries.com](mailto:CCHK-sales@cooperindustries.com)

**Australia**

61-2-8787-2777  
FAX: 61-2-9609-2342  
[CEASales@cooperindustries.com](mailto:CEASales@cooperindustries.com)

**India**

91-124-4683888  
FAX: 91-124-4683899  
[cchindia@cooperindustries.com](mailto:cchindia@cooperindustries.com)

**Eaton**  
1000 Eaton Boulevard  
Cleveland, OH 44122  
United States  
[Eaton.com](http://Eaton.com)

© 2016 Eaton  
All Rights Reserved  
Printed in USA  
Publication No. 5174-0216  
February 2016

Eaton is a registered trademark.

All other trademarks are property of their respective owners.