



## Galaxy Major



Galaxy Major has been designed with an all new 'floating glass' architectural housing and solves the problem of sky glow and light trespass by employing an asymmetric reflector system. Galaxy Major is rated to IP65, dust tight and low pressure water jet proof, with a robust die-cast aluminium body providing a long and reliable service.

- Die-cast aluminium construction for a long durable life
- IP65 dust tight and water jet proof for stay clean operation
- Anti-light pollution design avoids sky glow and light trespass
- Inbuilt inclinometer aids aim and set up
- Outstanding optical performance keeps quantity required to a minimum
- Supplied with lamp

**Lamp Options**

- 150W, 250W, 400W SON-T, 2000°K - E40 cap 
- 150W, 250W, 400W HQI-T, 4000°K - E40 cap 

**Materials**

- Body - die-cast aluminium powder coated black
- Lens - toughened soda lime glass
- Reflector - high purity, high reflectance, anodised aluminium
- Stirrup - steel powder coated in black finish

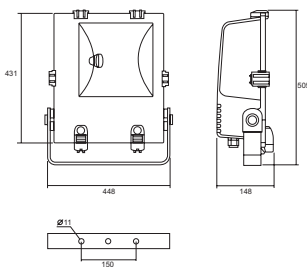
**Installation Notes**

- Suitable for column, wall and floor mounting
- Stirrup bolts directly to vertical surface for area floodlighting or to floor for façade lighting
- Use COLDHVB mounting bracket (order separately) if mounting on column or horizontal surface for area floodlighting
- 3 way, 1 x 2.5mm<sup>2</sup> terminal block
- Aimed by slackening side bolts and positioning angle using inclinometer on stirrup
- Front lens secured by latching clips. Hinges for easy lamp replacement
- Supplied complete with lamp
- For thermal safety, objects must not be placed within 1m of the product face
- Windage 0.193m<sup>2</sup>

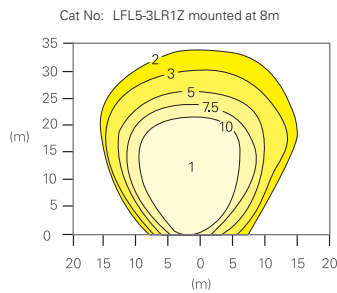
**Specification**

To specify state: Die cast aluminium, anti-light pollution low glare floodlight, with asymmetric reflector and toughened safety glass. Finished in black paint finish and dust tight and water jet proof to IP65, as Eaton's Galaxy Major range, part no. \_\_\_\_\_

**Dimensions**



**Photometric Data**



Polar Curve  
Galaxy GA250  
250W MBI  
Inclined at 20°  
Mounting height = 8m

See page 532 for design guide



**Catalogue Numbers**

Cat No	Description	Weight (kg)
GAM150S	Galaxy IP65 150W SON Floodlight c/w 2000K Lamp	11.5
GAM250S	Galaxy IP65 250W SON Floodlight c/w 2000K Lamp	11.9
GAM400S	Galaxy IP65 400W SON Floodlight c/w 2000K Lamp	12.4
GAM150MH	Galaxy IP65 150W MBI Floodlight c/w 4000K Lamp	11.5
GAM250MH	Galaxy IP65 250W MBI Floodlight c/w 4000K Lamp	11.9
GAM400MH	Galaxy IP65 400W MBI Floodlight c/w 4000K Lamp	12.4
GAMWG	Galaxy Wireguard	1.0